

👉 How to use NV Flash Utility?

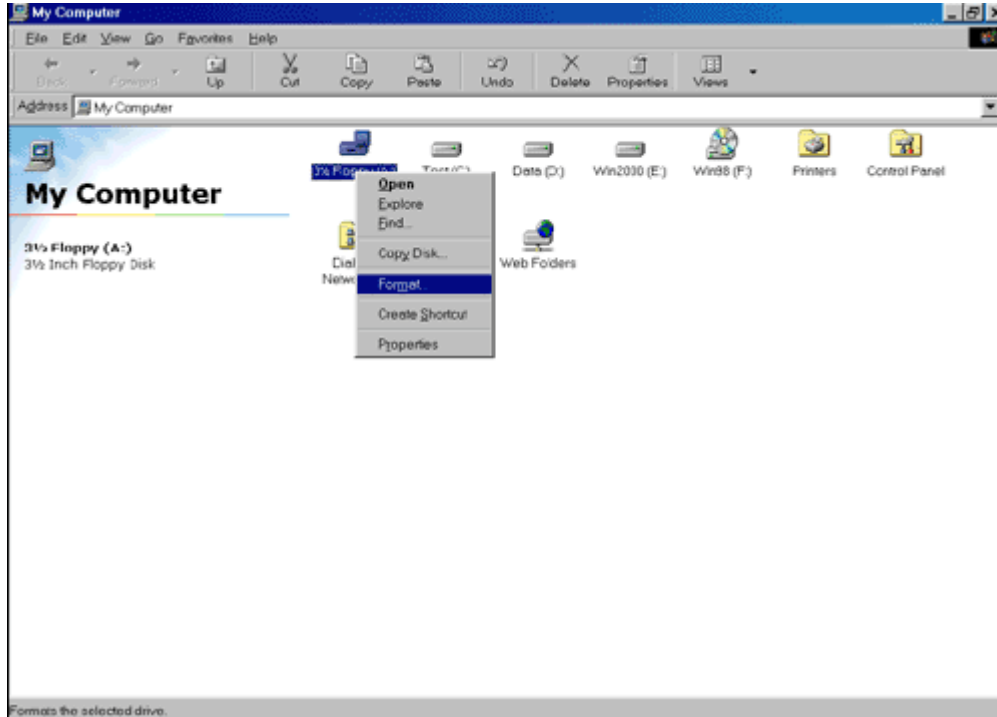
Step 1.

(1) If your mainboard has a BIOS protection jumper, change the setting to allow BIOS flashing.

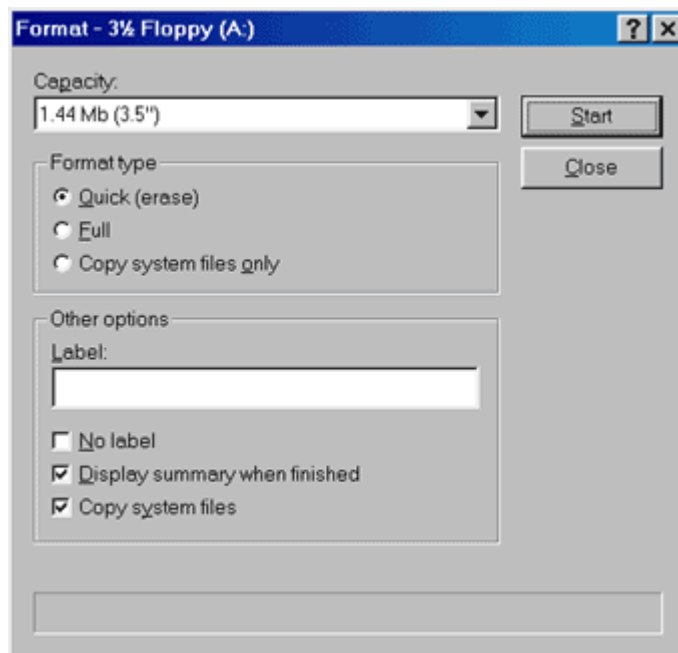
(2) Make a DOS boot diskette. (See example: Windows 98 O.S.)

Beware: Windows 2000/Me are not allowed to make a DOS boot diskette.

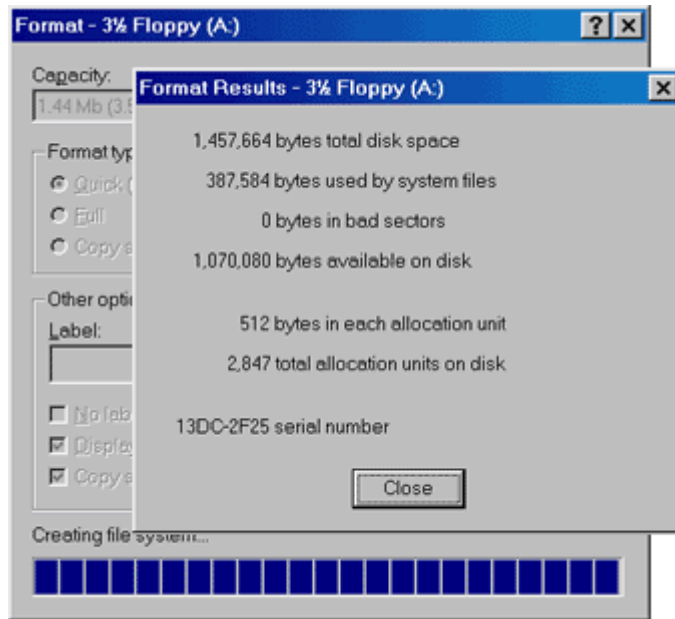
a. With an available floppy disk in the floppy drive. Please leave the diskette "UN-write protected" type. Double click the "My Computer" icon from Desktop, then click "3.5 diskette (A:)" and right click to select "Format (M)".



b. Select the Quick (erase) for Format Type, and pick both "Display summary when finished" and "Copy system files", after that press "Start". That will format the floppy and transfer the needed system files to it.



c. After the floppy has been formatted completely, please press "Close".



Step 2. Download BIOS and BIOS utility program

- (1) Please go to ECS website at <http://www.ecs.com.tw> and click "Download " section.
- (2) Choose an appropriate model name in accordance with user's manual or based on the motherboard revision that can be found near the AGP slot.

Step 3.

- (1) Make sure the system will boot from the floppy disk. After the system boot from floppy disk, type "A:\> dir" and press "Enter" to check the entire files in floppy A. Then type the "BIOS flash utility" and "BIOS file" after A:\>. In this case you have to type "A:\>nvflshsc -f 691n1p30.bin " and then press "Enter".

```
A:\>dir

Volume in drive A has no label
Volume Serial Number is 2A87-6CE1
Directory of A:\

EGA2    CPI        58,870    06-08-00  5:00p
EGA3    CPI        58,753    06-08-00  5:00p
EGA     CPI        58,870    06-08-00  5:00p
KEYB    COM        21,607    06-08-00  5:00p
KEYBOARD  SYS      34,566    06-08-00  5:00p
KEYBRD2  SYS      31,942    06-08-00  5:00p
KEYBRD3  SYS      31,633    06-08-00  5:00p
KEYBRD4  SYS      13,014    06-08-00  5:00p
MODE    COM        29,239    06-08-00  5:00p
COMMAND  COM       93,040    06-08-00  5:00p
DISPLAY  SYS      17,175    06-08-00  5:00p
AUTOEXEC  BAT         0    11-20-07  3:38p
CONFIG   SYS         0    11-20-07  3:38p
691N1P30  BIN     524,288    08-03-07  1:39p
NVFLSHSC  EXE     307,263    11-29-06  6:56p
        15 file(s)    1,280,260 bytes
        0 dir(s)      57,344 bytes free

A:\>nvflshsc -f 691n1p30.bin
```

- (2) Now screen appears the following Flash Utility screen. Please check whether new BIOS tag is correct. Right after that, press [Enter] to start BIOS flash procedure or press [Esc] to abort.
Beware: Please do not turn off the system while you are upgrading BIOS. It will render your BIOS corrupted and system totally inoperative.

```
A:\>nvflashsc -f 691n1p30.bin
NUFLASHSC version 18 August, 2006
NVIDIA C55G device found
NVIDIA MCP55-DP0 device found
Device Type = SST1 SST49LF040B (512KB) BL=0
Old ROM: NUMM version: 4.071.06 date: 02/06/07
"691n1p30.bin" Loaded Successfully (512 KB)
New ROM: NUMM version: 4.073.03 date: 07/10/07
Programming Main Block 84 of 112
```

```
A:\>nvflashsc -f 691n1p30.bin
NUFLASHSC version 18 August, 2006
NVIDIA C55G device found
NVIDIA MCP55-DP0 device found
Device Type = SST1 SST49LF040B (512KB) BL=0
Old ROM: NUMM version: 4.071.06 date: 02/06/07
"691n1p30.bin" Loaded Successfully (512 KB)
New ROM: NUMM version: 4.073.03 date: 07/10/07
Programming Main Block 112 of 112
Programming Boot Block 16 of 16
Verifying...
Flash ROM Successfully Programmed!
Old Checksum: 0x042fa0a1 New Checksum: 0x03fc8f0c

You Need to Restart the System

A:\>
```

(3) When the BIOS flash completed. It will auto restart the system.

Step 4. Load BIOS defaults

- (1) Normally the system redetects all devices after BIOS has been upgraded. Therefore, we highly recommend reloading the BIOS defaults after BIOS has been upgraded. This important step resets everything after the flash.
- (2) The boot up screen will indicate your motherboard model and current BIOS version.

```
Phoenix - AwardBIOS 06.00PG
Copyright (C) 1984-2003, Phoenix Technologies, LTD

(6A611TT3) Release number 691N1P30
NVIDIA BIOS Version: 2.053.91

Warning: The CPU has been changed or the BIOS has been flashed.
This requires a hard reboot. Please turn off your system in order to restart.

Press DEL to enter SETUP, ESC to Enter Boot Menu, ALT+F2 to enter AUDFLASH
07/11/2007-NFORCE-6A611TT3C-00
```

- (3) Press [DEL] key to enter BIOS setup when system is boot up. Use the arrows to highlight the item "LOAD OPTIMAL SETTINGS" then press "Enter". System will ask "Load Optimal Settings (Y/N)?" Press "Y" and "Enter" keys to confirm. Then press [F10] key to save & exit setup.

