



PRODUCT GUIDE

Elevate Computing: ECS Motherboards & PCs
Tailored for You!



<http://www.ecs.com.tw>



ECS: Your Trusted Partner for Comprehensive Technology

From Motherboards to One-Stop ICT Service Excellence

Table of Contents

03 | About ELITEGROUP

05 | Product Portfolio

07 | Motherboard Lineup

17 | Mini PC & AIO Lineup

33 | Notebook PC Lineup

Founded in 1987, Elitegroup Computer Systems is a leading global provider of motherboards, desktop PCs, mini PCs, All-in-One PCs, and notebooks. Building on over 30 years' experience as a leading manufacturer with professional design and manufacturing capability, ECS continues the strong core values of "Innovation, Quality, and Sustainability", which it aspires to deepen customer relationships through innovative competitiveness, while committing to creating a sustainable future through higher commercial operating efficiency.

ECS has built up the most professional and solid channels all over the world, including the Asia-Pacific region, the Americas, Europe, the Middle East, and Africa. The main channels targeting both B2C and B2B markets includes regional distributors, system integrators, e-commerce websites and ODM/OEM customers. ECS is strongly committed to developing cutting-edge technology in order to create innovative products under environmentally friendly designs. ECS's comprehensive quality control system ensures all of ECS products can be counted on for stability and reliability.

Our Strengths



Product Innovation

ECS has been dedicated to providing high-quality and innovative technologies and products to satisfy the market-oriented demands of computing hardware.



Worldwide Networking

ECS has built up the most professional sales and service channels through branch offices and multiple operational sites.

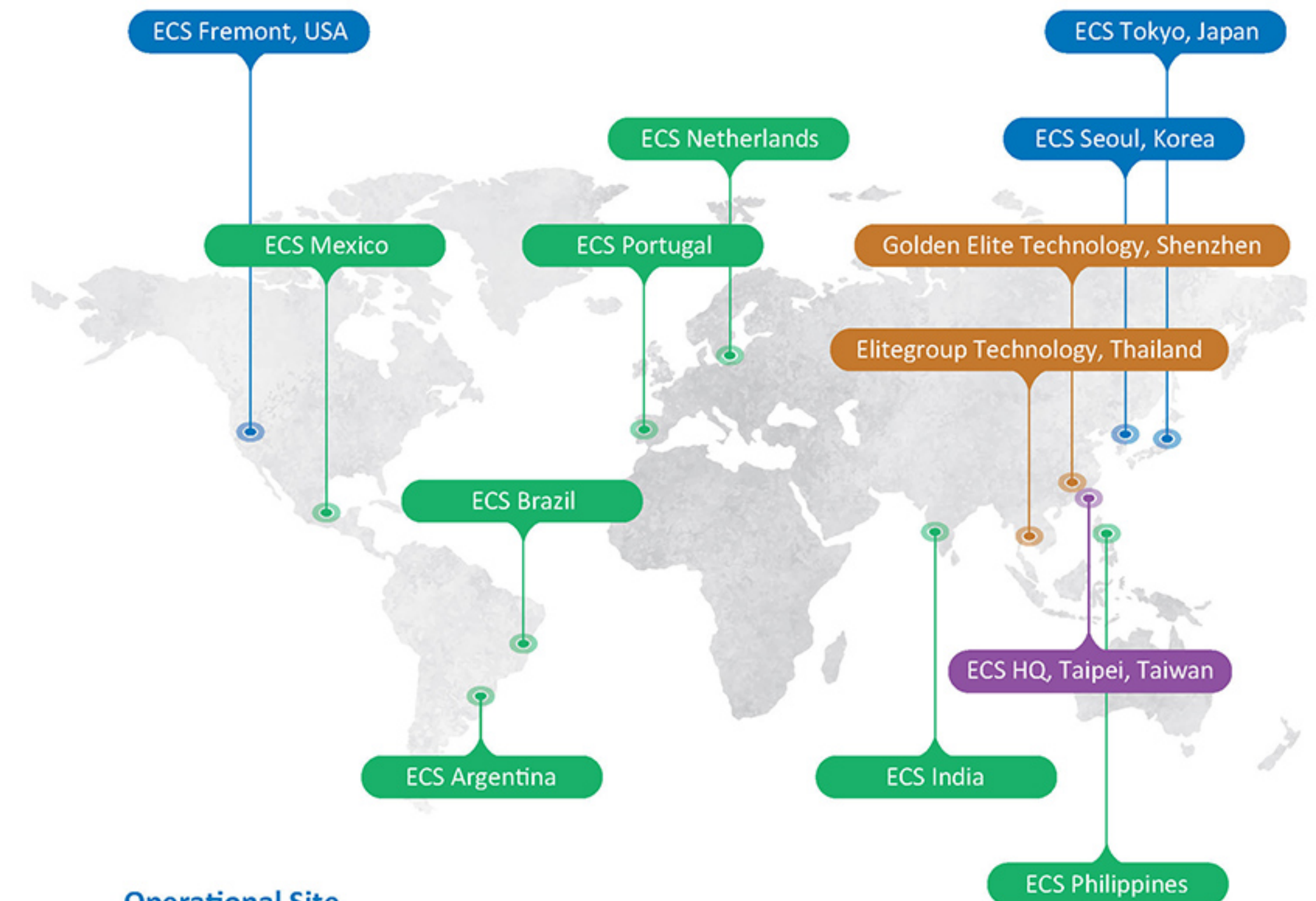


Green Commitment

ECS implements "The green competitive advantage quality program" to innovate and manufacture all green products under the policy of non-toxic supplier, material, process and products.



Global Service Network and Sales Channel



Operational Site

- | Taipei, Taiwan (Headquarter)
- | Fremont, California, U.S.A.
- | Tokyo, Japan
- | Seoul, Korea

Sales Representatives

- | India
- | Netherlands
- | Mexico
- | Philippines
- | Portugal
- | Brazil
- | Argentina

Manufacturing Production Base

- | Golden Elite Technology (Shenzhen), China
- | Elitegroup Technology (Thailand) Co., Ltd.



Product Portfolio



Motherboard

Performance, Stability, Scalability

ECS motherboards deliver reliable platforms for business, industrial, and AI-driven solutions.

- | Business & AI Platform Series
- | Industrial & Embedded Series
- | Value & Mainstream Series



Mini PC / NUC

Compact Size, Unlimited Possibilities

ECS LIVA Mini PCs combine performance, reliability, and flexibility in compact designs, delivering tailored solutions for business, AI, and industrial applications.

LIVA



- | Q Series Compact and space-saving design with flexible installation and Type-C PD power delivery.
- | Z Series Fanless, energy-efficient systems with rich I/O and multi-display support to enhance productivity.
- | One Series 1.2L performance platform supporting both Intel® and AMD® architectures with enterprise-grade manageability.
- | M Series Fanless industrial-grade design with wide-range DC input for stable and durable operation.
- | P Series High-performance and highly expandable platforms with versatile connectivity for industrial and commercial use.



Notebook

Advancing AI-Driven Innovation

Offer PC solutions for education, commercial, and high-end needs, prioritizing durability, proficiency, security, and accessibility features.



- | Education PC Combine portability, performance, and sturdiness—built for students to learn anywhere.
- | Chromebook Integrate purpose-built education features with the Chrome platform—delivering fast startup, smooth Google access, and reliable designs.
- | Business PC With flexible processor configuration options, this lineup offers strong productivity, semi-rugged design, solid security, and effortless mobility.
- | AI PC/Copilot+ PC Feature Copilot+ readiness, supporting over 45 TOPS NPU for fast on-device AI, powerful CPUs for demanding tasks, enterprise-grade protection, and long battery life for all-day use.



All-in-One PC

Elegant Design, Productive Performance

ECS LIVA All-in-One PCs integrate performance, functionality, and modern aesthetics into a streamlined form. They deliver efficient computing for business, retail, education, and home environments with options in multiple display sizes and memory configurations.

LIVA





Absolute COMPATIBILITY for Intel® Core Ultra Gen Processors with LGA 1851 socket

ECS performed thousands of tests and modifications to perfect layout for Intel 800 Series to ensure well compatibility with all new technology designs.

Quad Display Output

It supports quad display configurations with multiple interfaces up to UHD 4K (3840 x 2160) resolution, including HDMI, DisplayPort and D-sub for wide-range applications.

New-generation Expansion Slot

One PCIe 5.0 x16 slot is equipped for the wide bandwidth and superfast transmission speeds of next-gen graphics cards.

High Quality Audio Capacitors

With high quality audio capacitors and connectors, you can get the best possible signal output with less distortion.

Ultimate DDR5 Performance

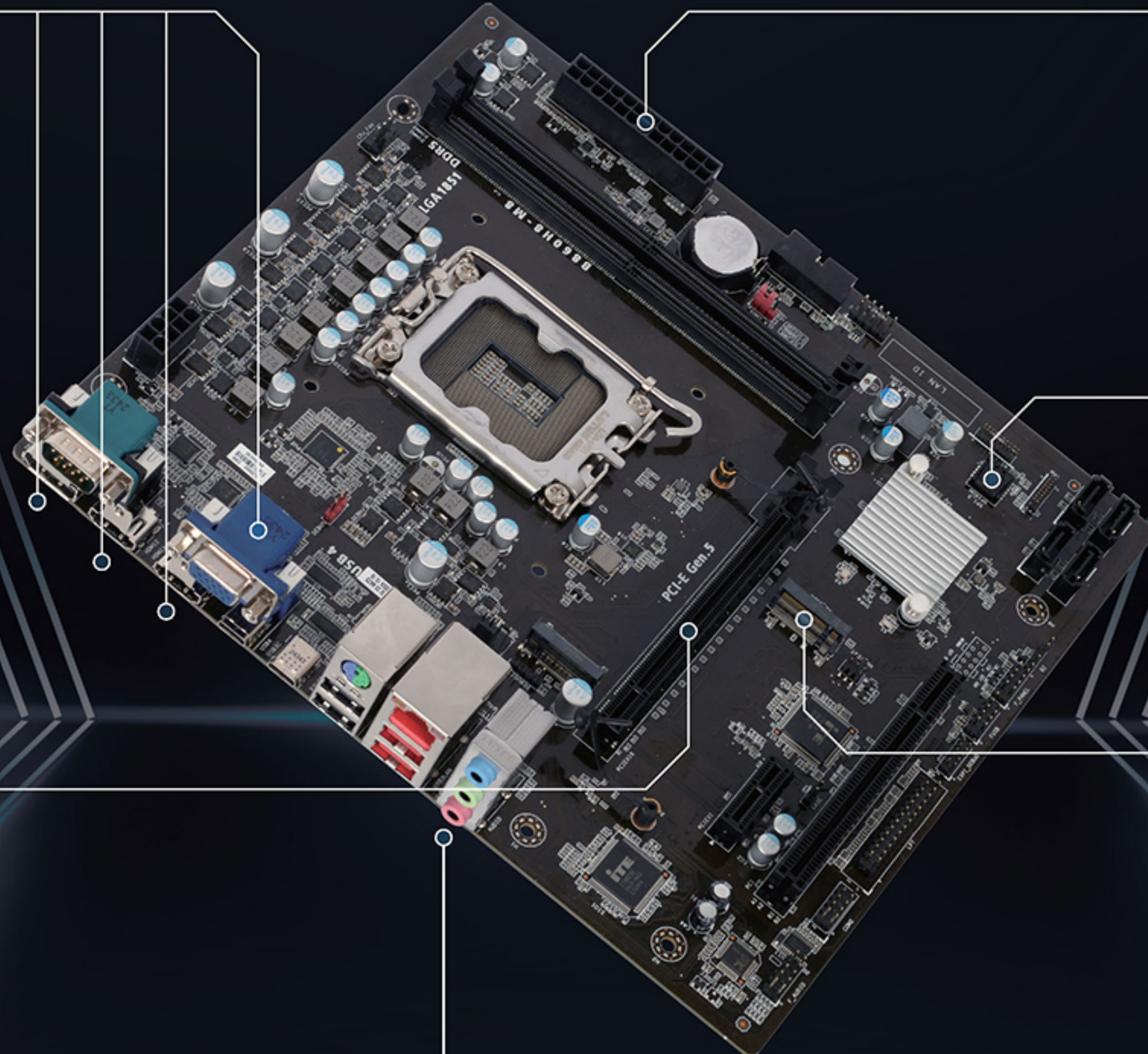
It offers dual channel DDR5 6400MHz memory up to 96GB to improve power management and optimized performance for computing system.

User-friendly BIOS

With latest UEFI BIOS optimizations for operating system, it can match all 800 series motherboards and easy to use.

Lightning Speed of M.2

M.2 2280 support delivers lightning-fast storage speeds. It is the perfect choice for an operating system or application drive, making your whole PC or professional apps work as fast as possible.



B860H8-M8





Z890H8-A2



DDR5

Form Factor	ATX
Chipset	Intel® Z890 Chipset
CPU	Intel® Core Ultra Processors for LGA 1851 Socket.
Memory	4 x DIMMs, Dual Channel DDR5 8800+(OC) / 6400MHz, Up to 256GB
Expansion Slots	1 x PCIe x16 Gen5 Slot 1 x PCIe x16 Gen4 Slot (runs x4) 2 x PCIe x1 Gen4 Slots 1 x M.2 2242/2280 PCIe Gen5 x4 SSD 3 x M.2 2242/2280/22110 PCIe Gen4 x4 SSD 1 x SFF-8654 4i interface (x4/ x2 Gen4 or 4x SATA3)
Storage	4 x SATA 6Gb/s Ports
Video Output	1 x HDMI™ / 1 x DisplayPort
Audio	Realtek ALC897 HD Audio CODEC
Ethernet	1x Realtek RTL8125D 2.5G LAN
USB (F+R)	USB4 Type-C: 0+1 / USB3.2 Gen2x2 Type-C: 1+0 USB3.2 Gen2x1: 0+2 / USB3.2 Gen1x1: 2+4 / USB2.0: 2+2
Internal Header	1 x 24 Pin ATX Power Connector 2 x 8 Pin +12V Power Connectors 2 x 3 Pin ARGB Headers / 1 x 4 Pin NRGB Header 1 x COM Header / 1 x 4 Pin CPU Fan Header 1 x 4 Pin Pump Fan Header / 4 x 4 Pin Chassis Fan Headers
Dimension	305 x 245 mm
OS Support	Windows 11 / Linux
Operation Temperature	0°C ~ 40°C

Q87V1-EM



DDR5

Form Factor	Micro-ATX
Chipset	Intel® Q870 Chipset
CPU	Intel® Core Ultra Processors for LGA 1851 Socket.
Memory	4 x U-DIMMs, Dual channel DDR5 5600MHz, Up to 192GB
Expansion Slots	1 x PCIe x16 Gen5 Slot 1 x PCIe x16 Gen4 Slot 2 x PCIe x1 Gen4 Slots 1 x M.2 PCIe Gen5 x4 2280 Key-M slot 1 x M.2 PCIe Gen4 x4 2280 Key-M slot
Storage	5 x SATA 3.0 6Gb/s Ports
Video Output	1 x HDMI™ / 2 x DisplayPort / 1 x D-Sub
Audio	Realtek ALC897 HD Audio CODEC
Ethernet	1x Intel i219v Gigabit LAN
USB (F+R)	USB3.2 Gen2x2: 0+1 / USB3.2 Gen2x1 Type-C: 2+0 USB3.2 Gen1: 4+2 / USB2.0: 2+3
Internal Header	1 x Front Audio Pannel Pin Header 1 x Front Panel Pin Header 1 x 26pin LTP Pin Header 1 x 10pin COM Port Header (RS232) 1 x 8pin Internal Speaker Headerr 1 x 2pin Intrusion Alarm Pin Header 1 x 5pin Card Reader Header
Dimension	244 x 244 mm
OS Support	Windows 11 / Linux
Operation Temperature	0°C ~ 40°C

H810H8-M2



DDR5

Form Factor	Micro-ATX
Chipset	Intel® H810 Chipset
CPU	Intel® Core Ultra Processors for LGA 1851 Socket (TDP 65W Max.)
Memory	2 x DIMMs, Dual Channel DDR5 6400MHz, Up to 96GB
Expansion Slots	1 x PCIe x16 Gen5 Slot 1 x PCIe x1 Gen4 Slot 1 x M.2 2280 Gen4 x4 SSD 1 x M.2 2280 Slot for SATA
Storage	2 x SATA 6Gb/s Ports
Video Output	1 x HDMI™ / 1 x DisplayPort / 1 x D-Sub
Audio	Realtek ALC897 HD Audio CODEC
Ethernet	1x Realtek RTL8111K Gigabit LAN (Co-Lay RTL8125B 2.5Gbps LAN)
USB (F+R)	USB 3.2 Gen2x1 Type-C: 0+1 USB 3.2 Gen2x1: 0+1 USB 3.2 Gen1x1 Type-C: 1+0 USB 3.2 Gen1x1: 2+0 USB 2.0: 2+2
Internal Header	1 x COM Header 1 x Case Open Header 1 x SPIH Header Onboard TPM IC 2.0
Dimension	244 x 215 mm
OS Support	Windows 11 / Linux
Operation Temperature	0°C ~ 40°C

H810H8-M8



DDR5

Form Factor	Micro-ATX
Chipset	Intel® H810 Chipset
CPU	Intel® Core Ultra Processors for LGA 1851 Socket. (TDP 65W Max.)
Memory	2 x DIMMs, Dual Channel DDR5 6400MHz, Up to 96GB
Expansion Slots	1 x PCIe x16 Gen5 Slot 2 x PCIe x1 Gen4 Slots 1 x M.2 2280 Gen4 x4 SSD 1 x M.2 2280 Gen4 x2 SSD
Storage	4 x SATA 6Gb/s Ports
Video Output	2 x HDMI™ 1 x DisplayPort 1 x D-Sub
Audio	Realtek ALC897 HD Audio CODEC
Ethernet	1x Intel i219v Gigabit LAN
USB (F+R)	USB3.2 Gen2x1 Type-C: 0+1 USB3.2 Gen2x1: 0+1 USB3.2 Gen1x1: 2+2 USB2.0: 4+2
Internal Header	1 x COM Header 1 x Case Open Header 1 x SPIH Header TPM IC 2.0 Header 1 x LPT Header
Dimension	244 x 215 mm
OS Support	Windows 11 / Linux
Operation Temperature	0°C ~ 40°C

B860H8-M8



DDR5

Form Factor	Micro-ATX
Chipset	Intel® B860 Chipset
CPU	Intel® Core Ultra Processors for LGA 1851 Socket. (TDP 65W Max.)
Memory	2 x DIMMs, Dual Channel DDR5 6400MHz, Up to 96GB
Expansion Slots	1 x PCIe x16 Gen5 Slot 1 x PCIe x1 Gen4 Slot 1 x PCI Slot 1 x M.2 2280 Gen5 x4 SSD 1 x M.2 2280 Gen4 x4 SSD
Storage	4 x SATA 6Gb/s Ports
Video Output	2 x HDMI™ 1 x DisplayPort 1 x D-Sub
Audio	Realtek ALC897 HD Audio CODEC
Ethernet	1x Realtek RTL8111K Gigabit LAN (Co-Lay RTL8125B 2.5Gbps LAN)
USB (F+R)	USB4 Type-C: 0+1 USB3.2 Gen2x2 Type-C: 0+1 USB3.2 Gen2x1: 0+2 USB3.2 Gen1x1: 2+0 USB2.0: 4+2
Internal Header	2 x COM (1 Header + 1 Connector) 1 x LPT Header 1 x TPM Header 1 x Case open Header 1 x SPIH Header
Dimension	244 x 215 mm
OS Support	Windows 11 / Linux
Operation Temperature	0°C ~ 40°C

B860H8-M14 V1.0



DDR5

Form Factor	Micro-ATX
Chipset	Intel® B860 Chipset
CPU	Intel® Core Ultra Processors for LGA 1851 Socket. (TDP 65W Max.)
Memory	2 x DIMMs, Dual Channel DDR5 6400MHz, Up to 96GB
Expansion Slots	1 x PCIe x16 Gen5 Slot 1 x PCIe x4 Gen4 Slot 1 x PCIe x1 Slot 1 x M.2 2280 Gen5 x4 SSD 1 x M.2 2280 Gen4 x4 SSD
Storage	2 x SATA 6Gb/s Ports
Video Output	1 x HDMI™ 1 x DisplayPort
Audio	Realtek ALC897 HD Audio CODEC
Ethernet	1x Realtek RTL8125BG 2.5G LAN
USB (F+R)	USB4 Type-C: 0+1 USB3.2 Gen2x1 Type-C: 1+0 USB3.2 Gen2x1: 2+1 USB2.0: 2+2
Internal Header	2 x COM (1 Header + 1 Connector) 1 x LPT Header 1 x TPM IC 1 x Case Open Header
Dimension	244 x 215 mm
OS Support	Windows 11 / Linux
Operation Temperature	0°C ~ 40°C

H810H8-TI



DDR5

Form Factor	Thin Mini-ITX
Chipset	Intel® H810 Chipset
CPU	Intel® Core Ultra Processors for LGA 1851 Socket. (TDP 65W Max.)
Memory	2 x SO-DIMMs, Dual Channel DDR5 6400MHz, Up to 96GB
Expansion Slots	1 x M.2 2280 Gen5 x4 SSD
Storage	2 x SATA 6Gb/s Ports
Video Output	2 x HDMI™
Audio	Realtek ALC897 HD Audio CODEC
Ethernet	1 x Realtek RTL8125B 2.5Gbps LAN
USB (F+R)	USB3.2 Gen2x1 Type-C: 0+1 USB3.2 Gen2x1: 0+1 USB3.2 Gen1x1: 2+2 USB2.0: 0+4
Internal Header	1 x COM Header 1 x DMIC & speaker Header Onboard TPM IC 2.0 1 x LVDS Header 2 x HDMI 1.4 Headers 1 x Case Open header 2 x SATA Connectors 2 x SATA Power Connectors 1 x Front Audio Header 1 x Front Panel Header
Dimension	170 x 170 mm
OS Support	Windows 11 / Linux
Operation Temperature	0°C ~ 40°C

H81V1-EI2



DDR5

Form Factor	Thin Mini-ITX
Chipset	Intel® H810 Chipset
CPU	Intel® Core Ultra Processors for LGA 1851 Socket. (TDP 65W Max.)
Memory	2 x SO-DIMMs, Dual Channel DDR5 5600MHz, Up to 64GB
Expansion Slots	1 x M.2 2280 Slot for PCIe x4 Gen5 SSD 1 x M.2 2280 Slot for PCIe x4 Gen4 SSD
Storage	2 x SATA 6Gb/s Ports
Video Output	1 x HDMI™ 1 x DisplayPort
Audio	Realtek ALC897 HD Audio CODEC
Ethernet	1x Realtek RTL8111K Gigabit LAN (Co-Lay RTL8125B 2.5Gbps LAN and Intel i219V)
USB (F+R)	USB3.2 Gen2x2 Type-C: 0+1 USB3.2 Gen1x1: 0+2 USB2.0: 4+2
Internal Header	1 x COM Header (RS232) 1 x Case open Header 1 x eDP/LVDS Header Onboard TPM IC 2.0 2 x SATA Connector 1 x SATA Power Connector 1 x Front Panel Header 1 x Front Audio Header 1 x 2Pin Remote Power Header
Dimension	170 x 170 mm
OS Support	Windows 11 / Linux
Operation Temperature	0°C ~ 40°C



W790E1-CE



DDR5

Form Factor	CEB
Chipset	Intel® W790 Chipset
CPU	Intel® Sapphire Rapids-64L Processors LGA4677 socket, 250W TDP
Memory	8 x DIMMs, 8 Channels RDIMM DDR5 4800MHz Up to 2TB, ECC/XMP support
Expansion Slots	3 x PCIe Gen 5 x16 2 x PCIe Gen 5 x8 (16/0; 8/8 mode) 1 x M.2 key M 2260/2280/22110 1 x M.2 key M 2260/2280
Storage	1 x M.2 Key M 2260/2280/22110 SSD 1 x M.2 Key M 2260/2280 SSD 8 x SATA 3.0 for HDD/ODD 1 x PCIe Gen 4 x4 SlimSAS
Audio	Realtek ALC1220 7.1 channel / Multi-Stream
Ethernet	1 x Intel® I226-LM 2.5G LAN 1 x Realtek RTL8126-CG 5G LAN
USB	2 x USB 3.2 Gen1 2 x USB 3.2 Gen2 X 1 1 x USB 3.2 Gen2 X 2 Typc-C 2 x USB 2.0
Dimension	305x267x1.97mm
OS Support	Windows11 / Linux
Operation Temp	0°C ~ 40°C

B760H7-M



DDR5

Form Factor	Micro-ATX
Chipset	Intel® B760 Chipset
CPU	12th/ 13th/ 14th Gen Intel® Core™ Processors for LGA 1700 Socket. (TDP 125W Max.)
Memory	2 x DIMMs, Dual Channel DDR5 6400MHz Up to 96GB
Expansion Slots	1 x PCIe x16 Gen4 Slot 1 x PCIe x1 Gen3 Slot 2 x M.2 2242/2280 Gen4 x4 SSD
Storage	3 x SATA 6Gb/s Ports
Video Output	1 x HDMI™ 1 x DisplayPort 1 x D-Sub
Audio	Realtek ALC897 HD Audio CODEC
Ethernet	1 x Realtek Gigabit LAN
USB (F+R)	USB 3.2 Gen1x1: 2+4 USB 2.0: 4+2
Internal Header	1 x COM Header 1 x Case open Header
Dimension	230 x 205 mm
OS Support	Windows 11 / Linux
Operation Temperature	0°C ~ 40°C

Q670H7-M9



DDR5

Form Factor	Micro-ATX
Chipset	Intel® Q670 Chipset
CPU	Intel® 12th & 13th & 14th Gen Processors for LGA 1700 Socket. (TDP 125W Max.)
Memory	2 x DIMMs, Dual Channel DDR5 5600MHz, Up to 96GB
Expansion Slots	1 x PCIe x16 Gen5 Slot 2 x PCIe x1 Gen3 Slots 1 x PCI Slot 2 x M.2 2260/2280 Gen4 x4 SSD
Storage	4 x SATA 6Gb/s Ports
Video Output	1 x HDMI™ 1 x DisplayPort 1 x D-Sub 1 x DVI
Audio	Realtek ALC897 HD Audio CODEC
Ethernet	1 x Intel i219LM Gigabit LAN
USB (F+R)	USB3.2 Gen2x1 Type-C: 0+1 USB3.2 Gen2x1: 0+1 USB3.2 Gen1x1: 2+2 USB2.0: 4+4
Internal Header	1 x COM Header 1 x LPT Header 1 x TPM Header / IC (opt.)
Dimension	244 x 225 mm
OS Support	Windows 11 / Linux
Operation Temperature	0°C ~ 40°C

H610H7-M7 V5.0



DDR5

Form Factor	Micro-ATX
Chipset	Intel® H610 Chipset
CPU	Intel® 12th & 13th & 14th Gen Processors for LGA 1700 Socket. (TDP 125W Max.)
Memory	2 x DIMMs, Dual Channel DDR5 4800MHz, Up to 64GB
Expansion Slots	1 x PCIe x16 Gen5 Slot 1 x PCIe x1 Gen3 Slot 1 x PCI Slot 1 x M.2 2242/2280 Gen3 x4 SSD 1 x M.2 2260/2280 for SATA/ PCIe Gen3 x2 SSD
Storage	4 x SATA 6Gb/s Ports
Video Output	1 x HDMI™ 1 x DisplayPort 1 x VGA 1 x DVI
Audio	Realtek ALC897 HD Audio CODEC
Ethernet	1 x Intel i219V Gigabit LAN
USB (F+R)	USB3.2 Gen2x1 Type-C: 0+1 USB3.2 Gen2x1: 0+1 USB3.2 Gen1x1: 2+0 USB2.0: 4+2
Internal Header	1 x COM Header 4 x SATA Connectors 1 x SPKR Header (Opt.) 1 x Case Open Head Onboard TPM IC 2.0
Dimension	244 x 210 mm
OS Support	Windows 11 / Linux
Operation Temperature	0°C ~ 40°C

B760H7-M2



DDR5

Form Factor	Micro-ATX
Chipset	Intel® B760 Chipset
CPU	12th/ 13th/ 14th Gen Intel® Core™ Processors for LGA 1700 Socket. (TDP 95W Max.)
Memory	2 x DIMMs, Dual Channel DDR5 6400MHz, Up to 96GB
Expansion Slots	1 x PCIe x16 Gen4 Slot 1 x PCIe x1 Gen3 Slot 1 x M.2 2280 Slot for SATA 2 x M.2 2242/2280 Gen4 x4 SSD
Storage	3 x SATA 6Gb/s Ports
Video Output	1 x HDMI™ 1 x DisplayPort 1 x D-Sub
Audio	Realtek ALC897 HD Audio CODEC
Ethernet	1 x Realtek RTL8111H Gigabit LAN
USB (F+R)	USB 3.2 Gen1x1: 2+4 USB 2.0: 3+2
Internal Header	1 x COM Header 1 x Case open Header 1 x TPM Header
Dimension	245 x 190 mm
OS Support	Windows 11 / Linux
Operation Temperature	0°C ~ 40°C

B760H7-M8 V1.0



DDR5

Form Factor	Micro-ATX
Chipset	Intel® B760 Chipset
CPU	Intel® 12th & 13th & 14th Gen Processors for LGA 1700 Socket. (TDP 125W Max.)
Memory	2 x DIMMs, Dual Channel DDR5 5600MHz, Up to 64GB
Expansion Slots	1 x PCIe x16 Gen5 Slot 1 x PCIe x1 Gen3 Slot 1 x PCI Slot 1 x M.2 2280 Gen5 x4 SSD 1 x M.2 2280 Gen4 x4 SSD
Storage	4 x SATA 6Gb/s Ports
Video Output	1 x HDMI™ 1 x DisplayPort 1 x D-Sub 1 x DVI
Audio	Realtek ALC897 HD Audio CODEC
Ethernet	1 x Intel i219V Gigabit LAN
USB (F+R)	USB3.2 Gen2x1 Type-C: 0+1 USB3.2 Gen2x1: 0+1 USB3.2 Gen1x1: 2+2 USB2.0: 3+2
Internal Header	1 x LPT Header 1 x TPM Header 1 x COM Port 1 x SPIH Header
Dimension	244 x 210 mm
OS Support	Windows 11 / Linux
Operation Temperature	0°C ~ 40°C

H610H7-M7 V7.0A



DDR5

Form Factor	Micro-ATX
Chipset	Intel® H610 Chipset
CPU	Intel® 12th & 13th & 14th Gen Processors for LGA 1700 Socket. (TDP 65W Max.)
Memory	2 x DIMMs, Dual Channel DDR5 5600MHz, Up to 64GB
Expansion Slots	1 x PCIe x16 Gen5 Slot 2 x PCIe x1 Gen3 Slots 1 x M.2 2280 PCIe Gen3 x4 SSD
Storage	4 x SATA 6Gb/s Ports
Video Output	1 x HDMI™ 1 x DisplayPort 1 x D-Sub
Audio	Realtek ALC897 HD Audio CODEC
Ethernet	1 x Intel i219V Gigabit LAN
USB (F+R)	USB3.2 Gen2x1 Type-C: 0+1 USB3.2 Gen2x1: 0+1 USB3.2 Gen1x1: 2+0 USB2.0: 3+2
Internal Header	1 x COM Header 1 x SPIH Header 1 x Case Open Head Onboard TPM IC 2.0
Dimension	244 x 210 mm
OS Support	Windows 11 / Linux
Operation Temperature	0°C ~ 40°C

H610H7-M2 V2.0



Form Factor	Micro-ATX
Chipset	Intel® H610 Chipset
CPU	Intel® 12th & 13th & 14th Gen Processors for LGA 1700 Socket. (TDP 65W Max.)
Memory	2 x DIMMs, Dual Channel DDR4 3200MHz, Up to 64GB
Expansion Slots	1 x PCIe x16 Gen4 Slot 1 x PCIe x1 Gen3 Slot 1 x M.2 2242/2280 Gen3 x4 SSD
Storage	4 x SATA 6Gb/s Ports
Video Output	1 x HDMI™ 1 x DisplayPort
Audio	Realtek ALC897 HD Audio CODEC
Ethernet	1 x Realtek RTL8111H Gigabit LAN
USB (F+R)	USB3.2 Gen1x1: 2+2 USB2.0: 2+4
Internal Header	2 x SATA Connectors 1 x Case Open Header 1 x Front Panel 1 x Audio Header
Dimension	229 x 205 mm
OS Support	Windows 11 / Linux
Operation Temperature	0°C ~ 40°C



H610H7-TI5 V2.1



Form Factor	Thin Mini-ITX
Chipset	Intel® H610 Chipset
CPU	Intel® 12th & 13th & 14th Gen Processors for LGA 1700 Socket. (TDP 65W Max.)
Memory	2 x DIMMs, Dual Channel DDR5 5600MHz, Up to 64GB
Expansion Slots	1 x M.2 2280 Slot for SATA/ PCIe Gen3 x4 SSD
Storage	2 x SATA 6Gb/s Ports
Video Output	1 x HDMI™ 1 x VGA 1 x LVDS
Audio	2-Channel HD Audio
Ethernet	1 x Gigabit LAN
USB (F+R)	USB3.2 Gen2x1: 0+2 USB3.2 Gen1x1: 2+0 USB2.0: 3+2
Internal Header	1 x COM Header 1 x DMIC & speaker Header 1 x TPM IC (Optional)
Dimension	170 x 170 mm
OS Support	Windows 11 / Linux
Operation Temperature	0°C ~ 40°C

ADLN-I N150



Form Factor	Mini-ITX
Chipset	N/A
CPU	Intel® Alder Lake-N SoC Intel® Twin Lake-N SoC
Memory	1 x SO-DIMM, DDR4 2666MHz Up to 16GB
Expansion Slots	1 x M.2 2280 Slot for SATA/ PCIe SSD
Storage	2 x SATA 6Gb/s Ports *SATA PORT 2 share with M.2
Video Output	1 x HDMI™ 1 x DisplayPort 1 x VGA
Audio	Realtek ALC897 HD Audio CODEC
Ethernet	1 x Realtek RTL8111H Gigabit LAN
USB (F+R)	USB3.2 Gen2x1: 0+2 USB3.2 Gen1x1: Onboard x2 USB2.0 : 0+2 / Onboard x4
Internal Header	1 x COM Port
Dimension	170 x 170 mm
OS Support	Windows 11 / Linux
Operation Temperature	0°C ~ 40°C

H610H7-IM1



Form Factor	Micro-ATX
Chipset	Intel® H610 Chipset
CPU	12th/ 13th/ 14th Gen Intel® Core™ Processors for LGA 1700 Socket
Memory	2 x DIMMs, Dual Channel DDR4 3200MHz, up to 64GB
Expansion Slots	1 x PCIe x16 Gen4 Slot 1 x PCIe x16 Gen3 Slot (x4 signal) 1 x PCIe x1 Gen3 Slot 1 x PCI Slot
Storage	1 x M.2 2280 PCIe x4 Gen3 SSD 4 x SATA 6Gb/s Ports
Video Output	1 x HDMI™ 1 x DisplayPort 1 x D-Sub
Audio	Realtek ALC897 HD Audio CODEC AMP for speaker
Ethernet	1 x Intel i219V Gigabit LAN 1 x Intel i226V 2.5Gbps LAN
USB (F+R)	2 x USB 3.2 Gen2x1 Ports 4 x USB 3.2 Gen1x1 Ports 6 x USB 2.0 Ports
Internal Header	10 x COM ports Dual LAN TPM
Dimension	244 x 244mm
OS Support	Windows 11 / Linux
Operation Temperature	0°C ~ 50°C

ADLN-I3



Form Factor	Mini-ITX
Chipset	N/A
CPU	Intel® Alder Lake-N SoC
Memory	1 x SO-DIMM, DDR4 3200MHz, up to 16GB
Expansion Slots	1 x PCIe x1 Slot 1 x M.2 2280 Slot for SATA/ PCIe SSD
Storage	1 x SATA 6Gb/s Port
Video Output	1 x HDMI™ 1 x DisplayPort 1 x VGA 1 x LVDS
Audio	Realtek ALC897 HD Audio CODEC
Ethernet	2 x Realtek RTL8111H Gigabit LAN
USB (F+R)	4 x USB 3.2 Gen2x1 Ports 4 x USB 2.0 Ports
Internal Header	1 x LPT, Case Open, Front Panel, Front Audio, TPM header 2 x COM Headers (RS-232, 8 Ports Internal) 1 x COM1: RS232 support 5/12V / RI (default) Jumper select (real I/O) RS232/422/485, BIOS selectable 1 x COM2: RS232/422/485, BIOS selectable (real I/O)
Dimension	170 x 170mm
OS Support	Windows 11 / Linux
Operation Temperature	0°C ~ 40°C

H610H7-TI5 V1.0



Form Factor	Thin Mini-ITX
Chipset	Intel® H610 Chipset
CPU	Intel® 12th & 13th & 14th Gen Processors for LGA 1700 Socket. (TDP 65W Max.)
Memory	2 x DIMMs, Dual Channel DDR4 3200MHz, Up to 64GB
Expansion Slots	1 x M.2 2280 Slot for SATA/ PCIe Gen3 x4 SSD
Storage	2 x SATA 6Gb/s Ports
Video Output	1 x HDMI™ 1 x VGA 1 x LVDS
Audio	2-Channel HD Audio
Ethernet	1 x Gigabit LAN
USB (F+R)	USB3.2 Gen2x1: 0+2 USB3.2 Gen1x1: 2+0 USB2.0: 3+2
Internal Header	1 x COM Header 1 x DMIC & speaker Header 1 x TPM IC (Optional)
Dimension	170 x 170 mm
OS Support	Windows 11 / Linux
Operation Temperature	0°C ~ 40°C

H610H7-M2 V1.0



Form Factor	Micro-ATX
Chipset	Intel® H610 Chipset
CPU	Intel® 12th & 13th & 14th Gen Processors for LGA 1700 Socket. (TDP 65W Max.)
Memory	2 x DIMMs, Dual Channel DDR4 3200MHz, Up to 64GB
Expansion Slots	1 x PCIe x16 Gen4 Slot 1 x PCIe x1 Gen3 Slot 1 x M.2 2260/2280 Slot for SATA/ PCIe Gen3 x4 SSD
Storage	4 x SATA 6Gb/s Ports
Video Output	1 x HDMI™ 1 x DisplayPort 1 x D-Sub
Audio	Realtek ALC897 HD Audio CODEC
Ethernet	1 x Realtek RTL8111H Gigabit LAN
USB (F+R)	USB3.2 Gen2x1: 0+2 USB3.2 Gen1x1: 2+0 USB2.0: 2+2
Internal Header	1 x COM Header 1 x TPM Header / IC (opt.) 1 x Case Open Header
Dimension	229 x 213 mm
OS Support	Windows 11 / Linux
Operation Temperature	0°C ~ 40°C

ADLN-I



Form Factor	Mini-ITX
Chipset	N/A
CPU	Intel® Alder Lake-N SoC
Memory	1 x SO-DIMM, DDR4 3200MHz, up to 16GB
Expansion Slots	1 x M.2 2280 Slot for SATA/ PCIe SSD
Storage	2 x SATA 6Gb/s Ports *SATA PORT 2 share with M.2
Video Output	1 x HDMI™ 1 x DisplayPort 1 x VGA
Audio	Realtek ALC897 HD Audio CODEC
Ethernet	1 x Realtek RTL8111H Gigabit LAN
USB (F+R)	2 x USB 3.2 Gen2x1 Ports 2 x USB 3.2 Gen1x1 Ports 6 x USB 2.0 Ports
Internal Header	1 x COM Port
Dimension	170 x 170mm
OS Support	Windows 11 / Linux
Operation Temperature	0°C ~ 40°C

ADLN-IE1



Form Factor	3.5-inch SBC
Chipset	N/A
CPU	Intel® Alder Lake-N SoC
Memory	1 x SO-DIMM, DDR5 4800MHz up to 16GB
Expansion Slots	1 x M.2 2280 Slot for SATA/ PCIe SSD
Storage	1 x SATA 6Gb/s Port
Video Output	2 x HDMI™ 1 x LVDS
Audio	Realtek ALC897 HD Audio CODEC
Ethernet	2 x Intel i226V 2.5Gbps LAN
USB (F+R)	4 x USB 3.2 Gen2x1 Ports 2 x USB 2.0 Ports
Internal Header	1 x Front Panel 1 x Front Audio 1 x TPM 4 x COM Headers (1 x RS232/422/485, BIOS selectable, RI/SV/12V select by jumper; 3 x RS232) 1 x GPIO 9V-36V wide range DC-IN
Dimension	146 x 101mm
OS Support	Windows 11 / Linux
Operation Temperature	0°C ~ 60°C



A620AAM5-M7



DDR5

Form Factor	Micro-ATX
Chipset	AMD A620A Chipset
CPU	AM5 Socket, AMD Ryzen™ 9000/8000/7000 series Processors
Memory	2 x DIMMs, Dual Channel DDR5 5200MHz, Up to 64GB
Expansion Slots	1 x PCIe x16 Gen4 Slot 1 x PCIe x1 Gen3 Slot 1 x M.2 2280 PCIe Gen4 x4 SSD
Storage	4 x SATA 6Gb/s Ports
Video Output	1 x HDMI™ 1 x DisplayPort
Audio	Realtek ALC897 HD Audio CODEC
Ethernet	1x Realtek RTL8111FP Gigabit LAN
USB (F+R)	USB3.2 Gen2x1 Type-C: 0+1 USB3.2 Gen2x1: 0+1 USB3.2 Gen1x1: 2+2 USB2.0: 2+2
Internal Header	2 x COM (2 Header) 1 x LPT Header 1 x CMOS Header 1 x Case Open Header 1 x BZ Header 1 x SPK Header Onboard TPM IC 2.0
Dimension	244 x 220 mm
OS Support	Windows 11 / Linux
Operation Temperature	0°C ~ 40°C

PRO600AM5-M5 V1.0



DDR5

Form Factor	Micro-ATX
Chipset	AMD PRO600 Knoll Chipset
CPU	AM5 Socket, AMD Ryzen™ 9000/8000/7000 series Processors (TDP 65W Max.)
Memory	2 x DIMMs, Dual Channel DDR5 4800/5600MHz, Up to 64GB(By CPU)
Expansion Slots	1 x PCIe x16 Gen4 Slot 1 x PCIe x1 Gen3 Slot 1 x M.2 2280 PCIe Gen4 x4 SSD
Storage	2 x SATA 6Gb/s Ports
Video Output	1 x HDMI™ 1 x DisplayPort 1 x VGA
Audio	Realtek ALC897 HD Audio CODEC
Ethernet	1 x Gigabit LAN
USB (F+R)	USB3.2 Gen2x1 Type-C: 0+1 USB3.2 Gen1x1: 2+1 USB2.0: 2+2
Internal Header	2 x COM (2 Header) 1 x LPT Header 1 x CMOS Header 1 x Case Open Header 1 x BZ Header 1 x SPK Header Onboard TPM IC 2.0
Dimension	225 x 205 mm
OS Support	Windows 11 / Linux
Operation Temperature	0°C ~ 40°C

A520AM4-M9



Form Factor	Micro-ATX
Chipset	AMD A520 Chipset
CPU	AM4 Socket, AMD Ryzen™ 5000/ 4000G/ 3000 Series Processors (TDP 95W Max.)
Memory	2 x DIMMs, DDR4 3200MHz, Up to 64GB
Expansion Slots	1 x PCIe x16 Gen3 Slot 2 x PCIe x1 Gen3 Slots 1 x M.2 2280 PCIe Gen3 x4 SSD
Storage	4 x SATA 6Gb/s Ports
Video Output	1 x HDMI™ 1 x DisplayPort 1 x VGA
Audio	6-Channel (5.1) HD Audio
Ethernet	1 x Gigabit LAN (Supports DASH)
USB (F+R)	USB3.2 Gen2x1 Type-C: 0+1 USB3.2 Gen2x1: 0+1 USB3.2 Gen1x1: 2+2 USB2.0: 4+2
Internal Header	2 x COM Headers 1 x LPT Header 1 x Case Open Header 1 x TPM IC onboard
Dimension	244 x 205 mm
OS Support	Windows 11 / Linux
Operation Temperature	0°C ~ 40°C

A300AM4-T15



Form Factor	Thin Mini-ITX
Chipset	AMD A300 Knoll Chipset
CPU	AM4 Socket, AMD Ryzen™ 5000/ 4000G/ 3000 Series Processors (TDP 65W Max.)
Memory	2 x SO-DIMMs, DDR4 3200MHz, Up to 64GB
Expansion Slots	1 x M.2 2242/2280 for SATA/ PCIe Gen3 x4 SSD
Storage	2 x SATA 6Gb/s Ports
Video Output	1 x HDMI™ 1 x VGA
Audio	6-Channel (5.1) HD Audio
Ethernet	1 x Gigabit LAN
USB (F+R)	USB3.2 Gen1x1: 2+2 USB2.0: 3+2
Internal Header	1 x LVDS Header 1 x Monitor Switch 1 x Backlight Power Jumper 1 x LCD Power Jumper 1 x LCD Panel Select Jumper 2 x SATA Power Connectors
Dimension	170 x 170 mm
OS Support	Windows 11 / Linux
Operation Temperature	0°C ~ 40°C

PRO665AM5-M9 V2.0



DDR5

Form Factor	Micro-ATX
Chipset	AMD PRO665 Chipset
CPU	AM5 Socket, AMD Ryzen™ 9000/8000/7000 series Processors
Memory	2 x DIMMs, Dual Channel DDR5 5200MHz, Up to 64GB
Expansion Slots	1 x PCIe x16 Gen4 Slot 1 x PCIe x1 Gen3 Slot 1 x M.2 2280 PCIe Gen4 x4 SSD
Storage	2 x SATA 6Gb/s Ports
Video Output	1 x HDMI™ 1 x DisplayPort
Audio	Realtek ALC897 HD Audio CODEC
Ethernet	1x Realtek RTL8111FP Gigabit LAN
USB (F+R)	USB3.2 Gen2x1 Type-C: 1+1 USB3.2 Gen2x1: 0+1 USB3.2 Gen1x1: 2+2 USB2.0: 0+4
Internal Header	2 x COM (2 Header) 1 x LPT Header 1 x CMOS Header 1 x Case Open Header 1 x BZ Header 1 x SPK Header Onboard TPM IC 2.0
Dimension	244 x 220 mm
OS Support	Windows 11 / Linux
Operation Temperature	0°C ~ 40°C

PRO500AM4-M5 V1.0



Form Factor	Micro-ATX
Chipset	AMD PRO500 Knoll Chipset
CPU	AM4 Socket, AMD Ryzen™ 5000/ 4000G/ 3000 Series Processors (TDP 65W Max.)
Memory	2 x DIMMs, DDR4 3200MHz, Up to 32GB
Expansion Slots	1 x PCIe x16 Gen3 Slot 1 x PCIe x1 Gen3 Slot 1 x M.2 2242/2280 for SATA/ PCIe Gen3 x4 SSD
Storage	2 x SATA 6Gb/s Ports
Video Output	1 x HDMI™ 1 x DisplayPort 1 x VGA
Audio	6-Channel (5.1) HD Audio
Ethernet	1 x Gigabit LAN
USB (F+R)	USB3.2 Gen1x1 Type-C: 0+1 USB3.2 Gen1x1: 2+1 USB2.0: 2+2
Internal Header	2 x COM Headers 1 x LPT Header 1 x Case Open Header 1 x TPM IC onboard
Dimension	220 x 205 mm
OS Support	Windows 11 / Linux
Operation Temperature	0°C ~ 40°C



LIVA, Living A Better Life!

With the combination of “Living” and “Life (Viva)”, LIVA is expressing the passion and the pursuit of aesthetics in every way of life.



Compact Size

Mini size < 0.3L
Intel Jasper Lake N / Twin Lake N
Memory / eMMC onboard
Dual display
HDMI-IN
PD Charging



Multi-functional & Efficient

Compact size < 0.8L
Intel Core Ultra / AMD Ryzen
DDR5 / DDR4 memory
Up to 4 displays
40Gbps USB-C
Multi-connection



Fanless Industrial

Longevity-Intel Alder Lake N / Elkhart Lake N
DDR5 memory
Wide Temperature
WWAN & Dual LAN
COM ports for RS232/RS422/RS485



Highly Performance

Barebone 1.2L
Intel Core Ultra / AMD Ryzen
DDR5 / DDR4 memory
Intel vPro / DASH LAN
TPM 2.0
NIST 800-193



Expandable & versatile connectivity

Barebone 2L-7L
Intel 13th / 14th CPU
DDR4 / DDR5 memory
PCIe x16 & x1 slots
Up to 6 COM ports
Multi-connection



All-in-One Series

Intel 13th / 14th CPU
DDR4 / DDR5 memory
23.8" / 27" IPS display
Touch monitor (opt.)



P700 Desktop PC

Performance
Flexibility
Dependability



LIVA P500 H610



Processor	12th/ 13th/ 14th Gen Intel® Core™ Processors with LGA1700 Socket (TDP 65W)
Chipset	Intel® H610 Chipset
Memory	2 x SO-DIMMs, DDR5 4800/ 5600MHz Up to 128GB DDR5 5600 MT/s for i9/i7 DDR5 4800 MT/s for i5/i3
Video Output	1 x HDMI™ Port 1 x DisplayPort 1 x VGA
Storage Interface	1 x M.2 2280 SATA3/ PCIe NVMe Gen4x4 SSD 1 x 2.5" SATA HDD
Audio	CODEC ALC 256 + Amplifier (2 watts) 2CH MIC-IN / LINE-OUT
TPM	TPM 2.0 chip (optional) / fTPM 2.0
Ethernet	1 x 2.5Gbps LAN (Intel i226-V) 1 x Gigabit LAN (Intel i219V)
Expansion Slot	1 x PCIe16 Gen5 slot 1 x M.2 2280 Key M PCIe Gen3 x4 / SATA3.0 for SSD 3 x 4pin Smart Fan (1 for CPU, 2 for SYS, Fan carve support)
Onboard Connectors	1 x SATA3 connector (FPC ZIF Bottom 12P 2R SMD) 2 x COM 2*5pin (1 for RS232, 1 for RS232/422/485) 1 x COM_SEL 2*3pin (RI/5V/12V) 1 x Battery (2*1pin) 1 x Internal Speaker (2*1pin)
Front Panel	1 x USB 3.2 Gen 2x1 Type-C 2 x USB 3.2 Gen 1x1 1 x USB 2.0 x1 2 x Audio port (MIC-IN / LINE-OUT) 1 x Power Button 1 x Power LED 1 x HDD LED
Back Panel	2 x RJ45 ports 1 x HDMI™ Port 1 x DisplayPort 1 x VGA 2 x Dual USB 2.0 2 x COM Port: COM1 support RS232 COM2 support RS232/RS422/RS485 by BIOS select 1 x Kensington Lock 2 x Antenna Hole 1 x DC-in for MB 1 x DC-in for External Graphic Card (Option) 1 x External Power Button
Drive Bays	2.5" HDD
Riser Card	1 x PCIe16 1 x PCIe1 1 x 12V power input Note: 1. Graphic Card size < L225.5 x M123.2 x H40.1mm 2. If Graphic Card power consumption is over 75W, then plug in external power input
Dimensions	250L x 200W x 95H mm (w/o stand rubber) 250L x 200W x 98.8H mm (w stand rubber)
OS Support	Windows 10 / 11 IoT Windows 11 Linux
Power Supply	Adapter 180W, 19V / 9.47A or 12V / 15A Adapter 240W, 12V/20A for External Graphic Card (option)

P200-I3



CPU	Intel® Core™ i3-N305 Processor Intel® Core™ i3-N300 Processor Intel® Processor N200 Intel® Processor N100
Memory	1 x SO-DIMM DDR4 3200MHz up to 16 GB
Storage	1 x M.2 2280 SATA3 / PCIe NVMe Gen3x1 SSD
Ethernet	2 x Gigabit LAN
Video Output	1 x HDMI™ Port 1 x DisplayPort 1 x VGA Port
Audio	2 x Audio Jacks
TPM	fTPM 2.0
I/O Ports	Front I/O: 2 x USB 2.0 4 x COM Ports (RS232) Rear I/O: 4 x USB 3.2 Gen 2x1 2 x USB 2.0 2 x COM Ports (RS232/RS422/RS485) 1 x PS/2 Combo Jack 2 x Audio Jack 1 x DC-in w/lock
Dimension	200 x 200 x 52.7 mm
OS Support	Windows 10 / 11 IoT Windows 11 Linux
Power Supply	12V/ 60W
Operation Temperature	0°C ~ 40°C
Others	Fanless thermal design : N300/N200/N100 Support VESA mount

LIVA P700 H810



CPU	Intel® Core Ultra Processors with LGA1851 Socket (TDP 65W Max.)
Memory	2 x DIMMs Dual Channel DDR5 6400MHz up to 96GB
Expansion Slots	1 x PCIe x16 Gen4 Slot (low profile) 1 x PCIe x 1 Gen4 Slot (low profile)
Storage	1 x M.2 2280 PCIe NVMe Gen4x4 SSD 2 x SATA 3.0 for 3.5" HDD/Slim ODD
Ethernet	1 x Gigabit LAN
Video Output	1 x HDMI™ Port 1 x DisplayPort 1 x VGA
Audio	1 x Combo Jack 3 x Audio Jacks
TPM	TPM 2.0 chip (default) / fTPM 2.0
I/O Ports	Front I/O: 1 x USB 3.2 Gen2 Type-C 1 x USB 3.2 Gen2 2 x USB 2.0 1 x Audio Combo Jack Rear I/O: 2 x USB 3.2 Gen1 2 x USB 2.0 3 x Audio Jacks 1 x COM port 1 x AC-in 1 x Kensington Lock
Dimension	299 x 92 x 290 mm
OS Support	Windows 11/ Linux
Power Supply	180W Power Supply Unit (PSU), 80 PLUS Bronze
Operation Temperature	0°C ~ 35°C
Others	1 x LPT port (optional)

LIVA P700 H610



CPU	12th/ 13th/ 14th Gen Intel® Core™ Processors with LGA1700 Socket (TDP 65W Max.)
Memory	2 x DIMMs Dual Channel DDR5 5600MHz up to 64GB
Expansion Slots	1 x PCIe x16 Gen3 Slot (low profile) 1 x PCIe x1 Gen3 Slot (low profile)
Storage	1 x M.2 2280 PCIe NVMe Gen3x4 SSD 2 x SATA 3.0 for 3.5" HDD/Slim ODD
Ethernet	1 x Gigabit LAN
Video Output	1 x HDMI™ Port 1 x DisplayPort 1 x VGA
Audio	1 x Combo Jack 3 x Audio Jacks
TPM	TPM 2.0 chip (default) / fTPM 2.0
I/O Ports	Front I/O: 1 x USB 3.2 Gen1 Type-C 3 x USB 3.2 Gen1 1 x Audio Combo Jack Rear I/O: 4 x USB 2.0 3 x Audio Jacks 1 x COM port 1 x AC-in 1 x Kensington Lock
Dimension	299 x 92 x 290 mm
OS Support	Windows 11/ Linux
Power Supply	180W Power Supply Unit (PSU), 80 PLUS Bronze
Operation Temperature	0°C ~ 40°C
Others	1 x LPT port (optional)

LIVA One / SF110 Series Mini PC

One Solution for Powerful, Flexible Computing



Superb Multitasking Engine

With CPU socket design, LIVA One / SF110 Series provides different models to support wide variety of processors for Intel® Core™ Ultra, Core™, Pentium® to Celeron® or AMD AM4 to AM5 to provide exceptional and diverse alternatives to adopt the selective configurations tackling your daily tasks.



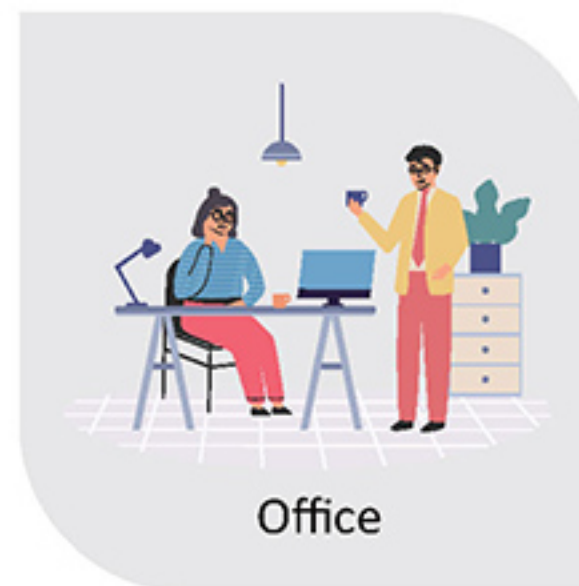
Superior Performance & High Capacity

With easy upgrade design, LIVA One / SF110 Series equips the M.2 PCIe 2280 & 2.5" SATA interface for storage and DDR5 or DDR4 dual-channel memory up to 128GB to fulfill various demands at work or entertainment.



Secure, Manageable, and Reliable

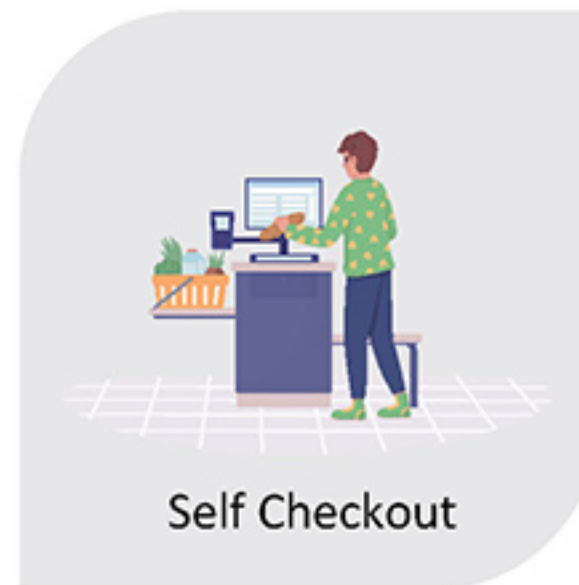
SF110 Series Mini PCs are designed to meet enterprise-level security and management standards. Different models support Intel® vPro® or DASH remote-management technologies, integrate TPM 2.0 for hardware-based protection, and comply with NIST SP 800-193 for firmware resilience and system integrity.



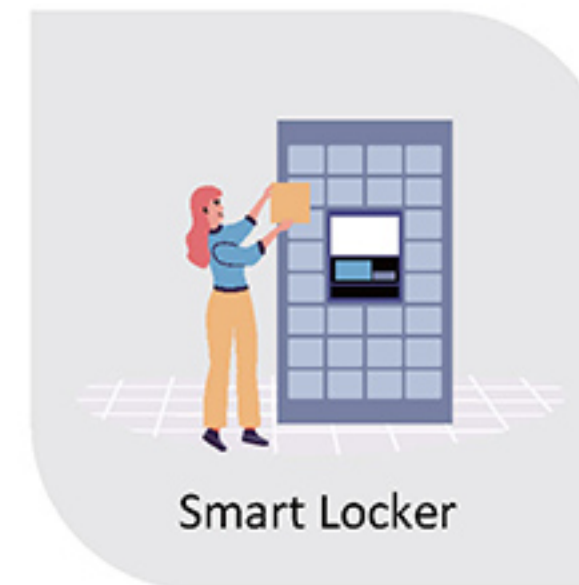
Office



SOHO



Self Checkout



Smart Locker



Boundless Vision Experience

SF110 Series not only gives you vivid visual experience on 4K UHD resolution at 60 fps up to 4 monitors at the same time, but also supports 3 different display interfaces including HDMI, DisplayPort and VGA for various applications.

Hyperfast Network Speed

LIVA One / SF110 Series equips one 2.5Gbps Ethernet LAN stabler and greater networking efficiency of data transmission to stream high quality videos among multiple devices simultaneously.



Rich I/O Ports

LIVA One / SF110 Series equips enough USB3.2 Type-C, USB3.2, USB 2.0 and optional COM ports for wide-range applications like digital signage, smart retail, smart cities, schools and businesses.





SF110 Q870



CPU	Intel® Core Ultra Processors with LGA1851 Socket (TDP 35W/ 65W Max.)	
Memory	2 x SO-DIMMs DDR5 6400MHz up to 128GB	
Storage	2 x M.2 2280 PCIe NVMe Gen4x4 SSD	
Ethernet	1 x 2.5Gbps LAN (with Intel® vPro)	
Video Output	1 x HDMI™ Port 2 x DisplayPort 1 x VGA Port (4 Video Outputs Max.)	
Audio	1 x Combo Jack 1 x MIC-in	
TPM	TPM 2.0 chip (default) / fTPM 2.0	
I/O Ports	Front I/O: 2 x USB 3.2 Gen 2x1 Type-C 2 x USB 3.2 Gen 2x1 1 x Combo Jack 1 x Mic-in	Rear I/O: 1 x USB 3.2 Gen 2x1 3 x USB 3.2 Gen 1x1 1 x DC-in 1 x Kensington Lock
Dimension	205 x 176 x 33 mm	
OS Support	Windows 10 / 11 IoT Windows 11 Linux	
Power Supply	20V/ 120W	
Operation Temperature	0°C ~ 40°C	
Others	1 x COM / VGA share same I/O port (optional) Support Internal Speaker Support VESA mount & vertical stand	

SF110 B860



CPU	Intel® Core Ultra Processors with LGA1851 Socket (TDP 35W/ 65W Max.)	
Memory	2 x SO-DIMMs DDR5 6400MHz up to 128GB	
Storage	2 x M.2 2280 PCIe NVMe Gen4x4 SSD	
Ethernet	1 x Gigabit LAN (with DASH function)	
Video Output	1 x HDMI™ Port 2 x DisplayPort 1 x VGA Port (4 Video Outputs Max.)	
Audio	1 x Combo Jack 1 x MIC-in	
TPM	TPM 2.0 chip (default) / fTPM 2.0	
I/O Ports	Front I/O: 2 x USB 3.2 Gen 2x1 Type-C 2 x USB 3.2 Gen 2x1 1 x Combo Jack 1 x Mic-in	Rear I/O: 4 x USB 3.2 Gen 1x1 1 x DC-in 1 x Kensington Lock
Dimension	205 x 176 x 33 mm	
OS Support	Windows 10 / 11 IoT Windows 11 Linux	
Power Supply	20V/ 120W	
Operation Temperature	0°C ~ 40°C	
Others	1 x COM / VGA share same I/O port (optional) Support Internal Speaker Support VESA mount & vertical stand	

SF110 B660



CPU	12th/ 13th/ 14th Gen Intel® Core™ Processors with LGA1700 Socket (TDP 35W/ 65W Max.)	
Memory	2 x SO-DIMMs DDR4 3200MHz up to 64GB	
Storage	1 x M.2 2280 SATA3/ PCIe NVMe Gen4x4 SSD 1 x 2.5" SATA3 HDD or SSD	
Ethernet	1 x Gigabit LAN (with DASH function)	
Video Output	1 x HDMI™ Port 2 x DisplayPort 1 x VGA Port (4 Video Outputs Max.)	
Audio	1 x Combo Jack 1 x MIC-in	
TPM	TPM 2.0 chip (default) / fTPM 2.0	
I/O Ports	Front I/O: 2 x USB 3.2 Gen 2x1 Type-C 2 x USB 3.2 Gen 2x1 1 x Combo Jack 1 x Mic-in	Rear I/O: 2 x USB 3.2 Gen 1x1 2 x USB 2.0 1 x DC-in 1 x Kensington Lock
Dimension	205 x 176 x 33 mm	
OS Support	Windows 10 / 11 IoT Windows 11 Linux	
Power Supply	19V/ 120W	
Operation Temperature	0°C ~ 40°C	
Others	1 x COM / VGA share same I/O port (optional) Support Internal Speaker Support VESA mount & vertical stand	

LIVA One H610 DDR5



CPU	12th/ 13th/ 14th Gen Intel® Core™ Processors with LGA1700 Socket (TDP 35W/ 65W Max.)	
Memory	2 x SO-DIMMs DDR5 4800/ 5600MHz up to 64GB	
Storage	1 x M.2 2280 PCIe NVMe Gen4x4 SSD 1 x 2.5" SATA3 HDD or SSD	
Ethernet	1 x 2.5Gbps LAN	
Video Output	1 x HDMI™ Port 2 x DisplayPort 1 x VGA Port (3 Video Outputs Max.)	
Audio	1 x Combo Jack 1 x MIC-in	
TPM	TPM 2.0 chip (optional) / fTPM 2.0	
I/O Ports	Front I/O: 2 x USB 3.2 Gen 2x1 Type-C 2 x USB 3.2 Gen 1x1 1 x Combo Jack 1 x Mic-in	Rear I/O: 2 x USB 3.2 Gen 1x1 2 x USB 2.0 1 x DC-in 1 x Kensington Lock
Dimension	205 x 176 x 33 mm	
OS Support	Windows 10 / 11 IoT Windows 11 Linux	
Power Supply	19V/ 120W	
Operation Temperature	0°C ~ 40°C	
Others	1 x COM / VGA share same I/O port (optional) Support Internal Speaker (optional) Support VESA mount & vertical stand	

LIVA One H810



CPU	Intel® Core Ultra Processors with LGA1851 Socket (TDP 35W/ 65W Max.)	
Memory	2 x SO-DIMMs DDR5 6400MHz up to 128GB	
Storage	2 x M.2 2280 PCIe NVMe Gen4x4 SSD	
Ethernet	1 x 2.5Gbps LAN	
Video Output	1 x HDMI™ Port 2 x DisplayPort 1 x VGA Port (3 Video Outputs Max.)	
Audio	1 x Combo Jack 1 x MIC-in	
TPM	TPM 2.0 chip (optional) / fTPM 2.0	
I/O Ports	Front I/O: 2 x USB 3.2 Gen 2x1 Type-C 2 x USB 3.2 Gen 2x1 1 x Combo Jack 1 x Mic-in	Rear I/O: 4 x USB 3.2 Gen 1x1 1 x DC-in 1 x Kensington Lock
Dimension	205 x 176 x 33 mm	
OS Support	Windows 10 / 11 IoT Windows 11 Linux	
Power Supply	20V/ 120W	
Operation Temperature	0°C ~ 40°C	
Others	1 x COM / VGA share same I/O port (optional) Support Internal Speaker (optional) Support VESA mount & vertical stand	

LIVA One H610



CPU	12th/ 13th/ 14th Gen Intel® Core™ Processors with LGA1700 Socket (TDP 35W/ 65W Max.)	
Memory	2 x SO-DIMMs DDR4 3200MHz up to 64GB	
Storage	1 x M.2 2280 SATA/ PCIe NVMe Gen3x4 SSD 1 x 2.5" SATA3 HDD or SSD	
Ethernet	1 x 2.5Gbps LAN	
Video Output	1 x HDMI™ Port 2 x DisplayPort 1 x VGA Port (3 Video Outputs Max.)	
Audio	1 x Combo Jack 1 x MIC-in	
TPM	TPM 2.0 chip (optional) / fTPM 2.0	
I/O Ports	Front I/O: 2 x USB 3.2 Gen 2x1 Type-C 2 x USB 3.2 Gen 1x1 1 x Combo Jack 1 x Mic-in	Rear I/O: 2 x USB 3.2 Gen 1x1 2 x USB 2.0 1 x DC-in 1 x Kensington Lock
Dimension	205 x 176 x 33 mm	
OS Support	Windows 10 / 11 IoT Windows 11 Linux	
Power Supply	19V/ 120W	
Operation Temperature	0°C ~ 40°C	
Others	1 x COM / VGA share same I/O port (optional) Support Internal Speaker (optional) Support VESA mount & vertical stand	



Mini PC | One Series - AMD

LIVA One PRO600



CPU	AMD Socket AM5 for AMD Ryzen™ 9000 & 8000 & 7000 Series Desktop Processors (TDP 35W/ 65W Max.)	
Memory	2 x SO-DIMMs DDR5 5600MHz up to 48GB	
Storage	2 x M.2 2280 PCIe NVMe Gen4x4 SSD	
Ethernet	1 x 2.5Gbps LAN	
Video Output	1 x HDMI™ Port 2 x DisplayPort 1 x VGA Port (4 Video Outputs Max.)	
Audio	1 x Combo Jack 1 x MIC-in	
TPM	TPM 2.0 chip (optional) / fTPM 2.0	
I/O Ports	Front I/O: 1 x USB 3.2 Gen 2x1 Type-C 2 x USB 3.2 Gen 1x1 1 x Combo Jack 1 x Mic-in	Rear I/O: 2 x USB 3.2 Gen 1x1 2 x USB 2.0 1 x DC-in 1 x Kensington Lock
Dimension	205 x 176 x 33 mm	
OS Support	Windows 10 / 11 IoT Windows 11 Linux	
Power Supply	20V/ 120W	
Operation Temperature	0°C ~ 40°C	
Others	1 x COM / VGA share same I/O port (optional) Support Internal Speaker (optional) Support VESA mount & vertical stand	

SF110 PRO600



CPU	AMD Socket AM5 for AMD Ryzen™ 9000 & 8000 & 7000 Series Desktop Processors (TDP 35W/ 65W Max.)	
Memory	2 x SO-DIMMs DDR5 5600MHz up to 48GB	
Storage	2 x M.2 2280 PCIe NVMe Gen4x4 SSD	
Ethernet	1 x Gigabit LAN (with DASH function)	
Video Output	1 x HDMI™ Port 2 x DisplayPort 1 x VGA Port (4 Video Outputs Max.)	
Audio	1 x Combo Jack 1 x MIC-in	
TPM	TPM 2.0 chip (default) / fTPM 2.0	
I/O Ports	Front I/O: 1 x USB 3.2 Gen 2x1 Type-C 2 x USB 3.2 Gen 1x1 1 x Combo Jack 1 x Mic-in	Rear I/O: 2 x USB 3.2 Gen 1x1 2 x USB 2.0 1 x DC-in 1 x Kensington Lock
Dimension	205 x 176 x 33 mm	
OS Support	Windows 10 / 11 IoT Windows 11 Linux	
Power Supply	20V/ 120W	
Operation Temperature	0°C ~ 40°C	
Others	1 x COM / VGA share same I/O port (optional) Support NIST 800-193 Support Internal Speaker Support VESA mount & vertical stand	

LIVA One A300



CPU	AMD® Ryzen™ 3/ 5/ 7 & Athlon™ Processors with AM4 Socket (TDP 35W/ 65W Max.)	
Memory	2 x SO-DIMMs DDR4 3200MHz up to 64GB	
Storage	1 x M.2 2280 SATA/ PCIe NVMe Gen3x4 SSD 1 x 2.5" SATA HDD or SSD*	
Ethernet	1 x 2.5Gbps LAN	
Video Output	SKU 1: 1 x HDMI™ Port 1 x DisplayPort 1 x VGA Port	SKU 2: 1 x HDMI™ Port 2 x DisplayPort
Audio	1 x Combo Jack 1 x MIC-in	
TPM	TPM 2.0 chip (optional) / fTPM 2.0	
I/O Ports	Front I/O: 2 x USB 3.2 Gen 2x1 Type-C 2 x USB 3.2 Gen 1x1 1 x Combo Jack 1 x Mic-In	Rear I/O: 2 x USB 3.2 Gen 1x1 2 x USB 2.0 1 x DC-in 1 x Kensington Lock
Dimension	205 x 176 x 33 mm	
OS Support	Windows 10 / 11 IoT Windows 11 Linux	
Power Supply	TDP 35W: 19V/ 90W TDP 65W: 19V/ 120W	
Operation Temperature	0°C ~ 40°C	
Others	1 x COM / VGA share same I/O port (optional) Support Internal Speaker (optional) Support VESA mount & vertical stand	

SF110 A300



CPU	AMD® Ryzen™ 3/ 5/ 7 & Athlon™ Processors with AM4 Socket (TDP 35W/ 65W Max.)	
Memory	2 x SO-DIMMs DDR4 3200MHz up to 64GB	
Storage	1 x M.2 2280 SATA/ PCIe NVMe Gen3x4 SSD 1 x 2.5" SATA HDD or SSD	
Ethernet	1 x Gigabit LAN (with DASH function)	
Video Output	1 x HDMI™ Port 1 x DisplayPort 1 x VGA Port	
Audio	1 x Combo Jack 1 x MIC-in	
TPM	TPM 2.0 chip (default) / fTPM 2.0	
I/O Ports	Front I/O: 2 x USB 3.2 Gen 2x1 Type-C 2 x USB 3.2 Gen 1x1 1 x Combo Jack 1 x Mic-In	Rear I/O: 2 x USB 3.2 Gen 1x1 2 x USB 2.0 1 x DC-in 1 x Kensington Lock
Dimension	205 x 176 x 33 mm	
OS Support	Windows 10 / 11 IoT Windows 11 Linux	
Power Supply	TDP 35W: 19V/ 90W TDP 65W: 19V/ 120W	
Operation Temperature	0°C ~ 40°C	
Others	1 x COM / VGA share same I/O port (optional) Support Internal Speaker Support VESA mount & vertical stand	



Mini PC | Q / M Series

LIVA Q4



CPU	Intel® Processor N250 Intel® Processor N150	
Memory	LPDDR5 onboard 4800MHz 8GB/ 16GB	
Storage	eMMC 128GB	
Ethernet	1 x 2.5Gbps LAN	
Video Output	2 x HDMI™ Ports (w/ CEC function) 1 x USB Type-C Alt. DisplayPort	
Audio	HDMI™ Audio	
TPM	fTPM 2.0	
I/O Ports	Front I/O: 1 x USB 3.2 Gen 2x1 Type-C 2 x USB 3.2 Gen 2x1 Rear I/O: 1 x USB Type-C (PD charger input only) Side I/O: 1 x Kensington Lock	
Dimension	78 x 78 x 35.5 mm	
OS Support	Windows 10 / 11 IoT Windows 11 Linux	
Power Supply	45W PD charger input	
Operation Temperature	0°C ~ 40°C	
Others	Support VESA mount	

LIVA Q3D



CPU	Intel® Pentium® Silver N6000 Processor Intel® Celeron® N5100 Processor Intel® Celeron® N4500 Processor	
Memory	LPDDR4 onboard 2400MHz 4GB/ 8GB	
Storage	eMMC 64GB/ 128GB Micro SD up to 128GB	
Ethernet	1 x Gigabit LAN	
Video Output	1 x HDMI™ Port (w/ CEC function) 1 x DisplayPort	
Audio	HDMI™ Audio	
TPM	fTPM 2.0	
I/O Ports	Front I/O: 2 x USB 3.2 Gen 1x1 1 x USB 2.0 Rear I/O: 1 x DC-In 1 x Kensington Lock Side I/O: 1 x Micro SD Card Slot 1 x Kensington Lock	
Dimension	74 x 74 x 34.6 mm	
OS Support	Windows 10 / 11 IoT Windows 11 Linux	
Power Supply	12V/ 36W	
Operation Temperature	0°C ~ 40°C	
Others	Support VESA mount	

LIVA Q3H



CPU	Intel® Pentium® Silver N6000 Processor Intel® Celeron® N5100 Processor Intel® Celeron® N4500 Processor	
Memory	LPDDR4 onboard 2400MHz 4GB/ 8GB	
Storage	eMMC 64GB/ 128GB Micro SD up to 128GB	
Ethernet	1 x Gigabit LAN	
Video Output	1 x HDMI™ Port (w/ CEC function) 1 x HDMI™ In Port	
Audio	HDMI™ Audio	
TPM	fTPM 2.0	
I/O Ports	Front I/O: 2 x USB 3.2 Gen 1x1 1 x USB 2.0 Rear I/O: 1 x DC-In 1 x Kensington Lock Side I/O: 1 x Micro SD Card Slot 1 x Kensington Lock	
Dimension	74 x 74 x 34.6 mm	
OS Support	Windows 10 / 11 IoT Windows 11 Linux	
Power Supply	12V/ 36W	
Operation Temperature	0°C ~ 40°C	
Others	Support VESA mount	

M600



CPU	Intel® Core™ i3-N305 Processor (6M Cache, up to 3.80 GHz) Intel® Processor N200 (6M Cache, up to 3.70 GHz) Intel Atom® x7211E Processor (6M Cache, up to 3.20 GHz) Intel Atom® x7425E Processor (6M Cache, up to 3.40 GHz)	
Memory	1 x SO-DIMM DDR5 4800MHz up to 16GB	
Storage	1 x M.2 2280 SATA/ PCIe NVMe Gen3x1 SSD	
Ethernet	2 x 2.5Gbps LAN	
Video Output	2 x HDMI™ Ports	
Audio	HDMI™ Audio	
TPM	TPM 2.0 chip (default) / fTPM 2.0	
I/O Ports	Front I/O: 3 x COM Ports (RS232) 1 x COM Port (RS232/RS422/RS485) 2 x USB 2.0 Rear I/O: 4 x USB 3.2 Gen 2x1 1 x 9~36V DC-in w/lock Side I/O: 1 x Kensington Lock	
Dimension	200 x 125 x 39.5 mm	
OS Support	Windows 10 / 11 IoT Windows 11 Linux	
Power Supply	19V/ 90W	
Operation Temperature	0°C ~ 50°C	
Others	Fanless thermal design Support Wall Mount, Din Rail (optional)	



LIVA Z Series Mini PC

Superior Performance, Compact Size



Fanless and Green Design

Designed with Intel® processor and the aluminum CPU heat sink, LIVA Z Series can keep it cool, silent and energy-saving for your daily work. The fanless design of LIVA Z series prevents the attraction of dust, overheating issues and also reduces malfunctions and increases the life-cycle of LIVA Z series.



Perfect Fit for Anywhere

LIVA Z Series designs compact size under 0.8L and universal VESA-mount to offers great flexibility in space-constrained environments such as rooms, offices, schools and digital signage locations.

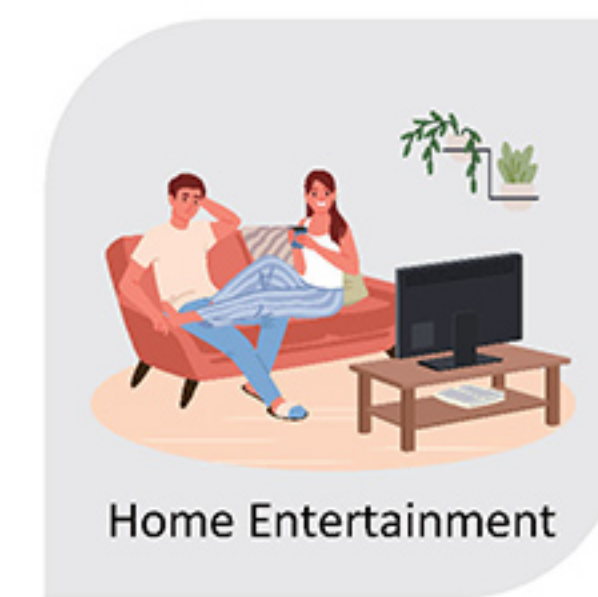


Extendable Design for RAM and Storage

With easy upgrade design, LIVA Z Series supports the dual storages for both M.2 PCIe 2280 & 2.5" SATA interface and DDR5 or DDR4 dual-channel memory up to 96GB to fulfill various demands at work or entertainment.



Online Learning



Home Entertainment



Self Order Kiosk



Digital Signage



Empower Your Work with Quad Displays

LIVA Z Series supports up to 4 independent displays with 4K UHD resolution through HDMI 2.0, DisplayPort, mini DP, or type-C to extend your workspace across multiple monitors for more efficient and comfortable productivity experiences.

High-efficient Networking

LIVA Z Series equips at least one Ethernet LAN up to 2.5Gbps stabler and greater networking efficiency of data transmission to stream high quality videos among multiple devices simultaneously.



Rich I/O Ports

LIVA Z Series equips enough USB ports for various devices and COM ports for different industry applications like self-service kiosks, retail POS machine and more!





LIVA Z11 PLUS



CPU	Intel® Core™ Ultra 7 Processor 255H Intel® Core™ Ultra 5 Processor 225H Intel® Core™ Ultra 7 Processor 155H Intel® Core™ Ultra 5 Processor 125H
Memory	2 x SO-DIMMs DDR5 6400MHz up to 96GB (225H/255H) 2 x SO-DIMMs DDR5 5600MHz up to 96GB (125H/155H)
Storage	1 x M.2 2280 Key M PCIe NVMe Gen4x4 SSD 1 x M.2 2242 Key M PCIe NVMe Gen4x4 SSD
Ethernet	1 x 2.5Gbps LAN 1 x Gigabit LAN
Video Output	2 x HDMI™ Port (w/ CEC function) 2 x USB Type-C Alt. DisplayPort
Audio	HDMI™ Audio
TPM	fTPM 2.0
I/O Ports	Front I/O: 1 x USB 3.2 Gen 2x2 Type-C 3 x USB 3.2 Gen 2x1 1 x USB 2.0 Rear I/O: 2 x USB4 40Gbps Type-C (Alt. DP) 2 x USB 2.0 1 x DC-in Side I/O: 1 x Kensington Lock
Dimension	114.4 x 114.4 x 54.5 mm
OS Support	Windows 10 / 11 IoT Windows 11 Linux
Power Supply	20V/ 120W
Operation	0°C ~ 40°C
Temperature	
Others	Support VESA mount

LIVA Z5 PLUS



CPU	14th Gen Intel® Core™ Processor TDP 15W - Intel® Core™ 7 Processor 150U - Intel® Core™ 5 Processor 120U - Intel® Core™ 3 Processor 100U 13th Gen Intel® Core™ Processor TDP 15W - Intel® Core™ i7-1365U Processor w/vPRO - Intel® Core™ i7-1355U Processor - Intel® Core™ i5-1345U Processor w/vPRO - Intel® Core™ i5-1335U Processor - Intel® Core™ i3-1315U Processor - Intel® Processor U300
Memory	2 x SO-DIMMs DDR4 3200MHz up to 64GB
Storage	1 x M.2 2280 Key M PCIe NVMe Gen4x4 SSD
Ethernet	2 x 2.5Gbps LAN (1 port optional for Intel® vPRO)
Video Output	2 x HDMI™ Ports (1 port w/ CEC function) 1 x DisplayPort 1 x USB Type-C Alt. DisplayPort
Audio	1 x Combo Jack
TPM	TPM 2.0 chip (optional) / fTPM 2.0 TPM 2.0 chip (default) / fTPM 2.0 (vPro SKU)
I/O Ports	Front I/O: 1 x USB4 20Gbps Type-C (Alt. DP) 3 x USB 3.2 Gen 2x1 1 x Combo Jack Rear I/O: 1 x DC-In Side I/O: 1 x Kensington Lock
Dimension	148 x 120 x 38.4 mm
OS Support	Windows 10 / 11 IoT Windows 11 Linux
Power Supply	19V/ 90W
Operation	0°C ~ 40°C
Temperature	
Others	Support VESA mount

LIVA Z4F



CPU	Intel® Core™ 3 Processor N350 Intel® Processor N250 Intel® Processor N150
Memory	1 x SO-DIMM DDR5 4800MHz up to 16GB
Storage	1 x M.2 2280 Key M PCIe NVMe Gen3x4 SSD
Ethernet	2 x Gigabit LAN
Video Output	2 x HDMI™ Ports 1 x USB Type-C Alt. DisplayPort
Audio	HDMI™ Audio
TPM	fTPM 2.0
I/O Ports	Front I/O: 1 x USB 3.2 Gen 2x1 Type-C 3 x USB 3.2 Gen 2x1 1 x USB 2.0 Rear I/O: 2 x USB 2.0 1 x DC-in Side I/O: 1 x Kensington Lock
Dimension	114.4 x 114.4 x 54.5mm
OS Support	Windows 10 / 11 IoT Windows 11 Linux
Power Supply	19V/ 65W
Operation	0°C ~ 35°C
Temperature	
Others	Fanless thermal design Support VESA mount

LIVA Z4



CPU	Intel® Processor N150
Memory	1 x SO-DIMM DDR4 2666MHz up to 16GB
Storage	1 x M.2 2280 Key M PCIe NVMe Gen3x2 SSD
Ethernet	1 x Gigabit LAN
Video Output	1 x HDMI™ Port 1 x DisplayPort
Audio	1 x Combo Jack 1 x Digital Mic
TPM	fTPM 2.0
I/O Ports	Front I/O: 2 x USB 3.2 Gen 1x1 1 x Combo Jack 1 x Digital Mic Rear I/O: 2 x USB 2.0 1 x DC-in 1 x Kensington Lock
Dimension	99.9 x 99.9 x 33 mm
OS Support	Windows 10 / 11 IoT Windows 11 Linux
Power Supply	12V/ 30W
Operation	0°C ~ 40°C
Temperature	
Others	Support VESA mount

LIVA Z5E PLUS



CPU	14th Gen Intel® Core™ Processor TDP 15W - Intel® Core™ 7 Processor 150U - Intel® Core™ 5 Processor 120U - Intel® Core™ 3 Processor 100U 13th Gen Intel® Core™ Processor TDP 15W - Intel® Core™ i7-1365U Processor w/vPRO - Intel® Core™ i7-1355U Processor - Intel® Core™ i5-1345U Processor w/vPRO - Intel® Core™ i5-1335U Processor - Intel® Core™ i3-1315U Processor - Intel® Processor U300
Memory	2 x SO-DIMMs DDR4 3200MHz up to 64GB
Storage	1 x M.2 2280 Key M PCIe NVMe Gen4x4 SSD 1 x 2.5" SATA HDD/SSD (optional)
Ethernet	2 x 2.5Gbps LAN (1 port optional for Intel® vPRO)
Video Output	2 x HDMI™ Ports (1 port w/ CEC function) 1 x DisplayPort 1 x USB Type-C Alt. DisplayPort
Audio	1 x Combo Jack
TPM	TPM 2.0 chip (optional) / fTPM 2.0 TPM 2.0 chip (default) / fTPM 2.0 (vPro SKU)
I/O Ports	Front I/O: 1 x USB4 20Gbps Type-C (Alt. DP) 3 x USB 3.2 Gen 2x1 1 x Combo Jack Rear I/O: 2 x COM Ports (RS232, RS422, RS485) 1 x DC-In Side I/O: SKU1: 2 x COM Ports (RS232) SKU2: 1 x HDMI™-in (for capture card) 1 x Kensington Lock
Dimension	148 x 120 x 53.9 mm
OS Support	Windows 10 / 11 IoT Windows 11 Linux
Power Supply	19V/ 90W
Operation	0°C ~ 40°C
Temperature	
Others	Support Capture Card (optional) Support VESA mount

LIVA Z5F PLUS



CPU	14th Gen Intel® Core™ Processor TDP 15W - Intel® Core™ 7 Processor 150U - Intel® Core™ 5 Processor 120U - Intel® Core™ 3 Processor 100U 13th Gen Intel® Core™ Processor TDP 15W - Intel® Core™ i7-1365U Processor w/vPRO - Intel® Core™ i7-1355U Processor - Intel® Core™ i5-1345U Processor w/vPRO - Intel® Core™ i5-1335U Processor - Intel® Core™ i3-1315U Processor - Intel® Processor U300
Memory	2 x SO-DIMMs DDR4 3200MHz up to 64GB
Storage	1 x M.2 2280 Key M PCIe NVMe Gen4x4 SSD 1 x 2.5" SATA HDD/SSD (optional)
Ethernet	2 x 2.5Gbps LAN (1 port optional for Intel® vPRO)
Video Output	2 x HDMI™ Ports (1 port w/ CEC function) 1 x DisplayPort 1 x USB Type-C Alt. DisplayPort
Audio	1 x Combo Jack
TPM	TPM 2.0 chip (optional) / fTPM 2.0 TPM 2.0 chip (default) / fTPM 2.0 (vPro SKU)
I/O Ports	Front I/O: 1 x USB4 20Gbps Type-C (Alt. DP) 3 x USB 3.2 Gen 2x1 2 x COM Ports (RS232, RS422, RS485) 1 x Combo Jack 1 x DC-In Rear I/O: 2 x COM Ports (RS232)
Dimension	242 x 120 x 30 mm
OS Support	Windows 10 / 11 IoT Windows 11 Linux
Power Supply	19V/ 90W
Operation	0°C ~ 50°C
Temperature	
Others	Support Wall Mount, Din Rail Fanless thermal design

LIVA Z3



CPU	Intel® Pentium® Silver N6000 Processor Intel® Celeron® N5100 Processor Intel® Celeron® N4500 Processor
Memory	2 x SO-DIMMs DDR4 2933MHz up to 16GB
Storage	eMMC 5.1 up to 128GB 1 x M.2 2280 Key M PCIe NVMe Gen3x2 SSD
Ethernet	1 x Gigabit LAN
Video Output	1 x HDMI™ Port 1 x mini DisplayPort
Audio	1 x Combo Jack 1 x Digital Mic
TPM	fTPM 2.0
I/O Ports	Front I/O: 1 x USB 3.2 Gen 2x1 Type-C 3 x USB 3.2 Gen 1x1 1 x Combo Jack 1 x Digital Mic Rear I/O: 2 x USB 2.0 1 x DC-In Side I/O: 1 x Kensington Lock
Dimension	117 x 128 x 35 mm
OS Support	Windows 10 / 11 IoT Windows 11 Linux
Power Supply	19V/ 65W
Operation	0°C ~ 40°C
Temperature	
Others	Fanless thermal design Support VESA mount

LIVA Z3E



CPU	Intel® Pentium® Silver N6000 Processor Intel® Celeron® N5100 Processor Intel® Celeron® N4500 Processor
Memory	2 x SO-DIMMs DDR4 2933MHz up to 16GB
Storage	eMMC 5.1 up to 128GB 1 x M.2 2280 Key M PCIe NVMe Gen3x2 SSD 1 x 2.5" SATA HDD/SSD (optional)
Ethernet	1 x Gigabit LAN
Video Output	1 x HDMI™ Port 1 x mini DisplayPort
Audio	1 x Combo Jack 1 x Digital Mic
TPM	fTPM 2.0
I/O Ports	Front I/O: 1 x USB 3.2 Gen 2x1 Type-C 3 x USB 3.2 Gen 1x1 1 x Combo Jack 1 x Digital Mic Rear I/O: 2 x USB 2.0 1 x DC-In Side I/O: 2 x COM (RS232) 1 x Kensington Lock
Dimension	117 x 128 x 52.9 mm
OS Support	Windows 10 / 11 IoT Windows 11 Linux
Power Supply	19V/ 65W
Operation	0°C ~ 40°C
Temperature	
Others	Fanless thermal design Support VESA mount



Mini PC | Z Series - AMD

LIVA Z8 PLUS



CPU	AMD Ryzen™ AI9 HX 370 Processor
Memory	2 x SO-DIMMs LPDDR5 7500MHz up to 64GB
Storage	2 x M.2 2280 Key M PCIe NVMe Gen4x4 SSD
Ethernet	2 x 2.5Gbps LAN
Video Output	1 x HDMI™ Port 1 x DisplayPort 2 x USB Type-C Alt. DisplayPort
Audio	2 x Combo Jack
TPM	fTPM 2.0
I/O Ports	Front I/O: 1 x USB4 Type-C (Alt. DP) 2 x USB 3.2 Gen 1x1 1 x Audio Jacks Rear I/O: 1 x USB4 Type-C (Alt. DP) 2 x USB 3.2 Gen 1x1 1 x DC-in 1 x Audio Jacks 1 x Kensington Lock
Dimension	147 x 147 x 55.8mm
OS Support	Windows 10 / 11 IoT Windows 11 Linux
Power Supply	19V / 120W
Operation	0°C ~ 45°C
Temperature	
Others	Support VESA mount

LIVA Z6 PLUS



CPU	AMD Ryzen™ 7 H 255 Processor
Memory	2 x SO-DIMMs DDR5 5600MHz up to 64GB
Storage	1 x M.2 2280 Key M PCIe NVMe Gen4x4 SSD
Ethernet	1 x 2.5Gbps LAN
Video Output	1 x HDMI™ Port 1 x DisplayPort 1 x USB Type-C Alt. DisplayPort
Audio	1 x Combo Jack
TPM	fTPM 2.0
I/O Ports	Front I/O: 1 x USB4 Type-C (Alt. DP) 2 x USB 3.2 Gen 1x1 1 x Audio Jacks Rear I/O: 4 x USB 3.2 Gen 1x1 1 x DC-in
Dimension	128 x 128 x 37 mm
OS Support	Windows 10 / 11 IoT Windows 11 Linux
Power Supply	19V / 120W
Operation	0°C ~ 40°C
Temperature	
Others	Support VESA mount



All-in-One PC



LIVA AiO G24-MH610



Screen Size	23.8"
CPU	12th/ 13th/ 14th Gen Intel® Core™ Processors
Motherboard	H610H7-T15
Display	Full HD with LED-backlight LCD Support 10-point Multi-touch (Optional) 178° Wide-viewing Angle Aspect Ratio 16:9
Memory	2 x SO-DIMMs, DDR4 3200MHz
Storage	2 x SO-DIMMs, DDR5 5600MHz 1 x 2.5" SATA HDD/ SSD 1 x M.2 2280 Slot for SATA/ PCIe Gen3 SSD
Camera	2MP Webcam w/DMIC
ODD	1 x Slim Optical DVD-RW or 1 x 2.5" SATA HDD/ SSD (Optional)
Video Output	1 x HDMI™ Port 1 x VGA
Ethernet	1 x Gigabit LAN
Audio	2 x 3W Speakers
I/O	Side: 2 x USB 3.2 Gen 1x1 2 x Audio Jacks 1 x Card Reader (SD/ MMC/ Memory Stick) 1 x COM Port (Optional) Rear: 2 x USB 3.2 Gen 2x1 2 x USB 2.0 2 x Audio Jacks 1 x 19V DC-In
OS Support	Windows 11
Power Supply	120W
Operation	0°C ~ 40°C
Temperature	

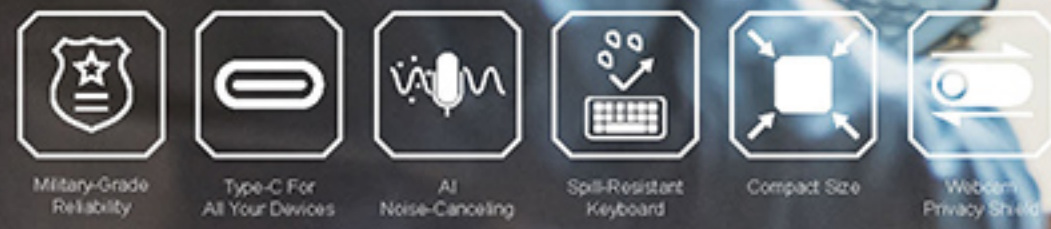
LIVA AiO G27-MH810



Screen Size	27"
CPU	Intel® Core Ultra Processors with LGA1851 Socket
Motherboard	H810H8-TI
Display	Full HD with LED-backlight LCD Support 10-point Multi-touch (Optional) 178° Wide-viewing Angle Aspect Ratio 16:9
Memory	2 x SO-DIMMs, DDR5 6400MHz up to 96GB
Storage	1 x 2.5" SATA HDD/ SSD (Optional) 1 x M.2 2280 Slot PCIe Gen5x4 SSD
Camera	3MP Webcam
ODD	1 x Slim Optical DVD-RW (Optional)
Video Output	2 x HDMI™ Ports
Ethernet	1 x 2.5Gbps LAN
Audio	2 x 3W Speakers
I/O	Side: 1 x USB 3.0 Type-C 2 x USB 3.0 1 x Audio Jack 1 x Card Reader (SD/mSD/CF) Rear: 1 x USB 3.2 Gen2x1 Type-C 1 x USB 3.2 Gen2x1 2 x USB 3.0 2 x Audio Jacks 1 x 19V DC-in
OS Support	Windows 11
Power Supply	120W
Operation	0°C ~ 40°C
Temperature	



Versatile and Adaptable ECS Educational PCs



Elevate Learning. Stay Ahead.



Durable Build Quality

ECS educational PCs are built with a durable design that meets MIL-STD-810H standards, ensuring they can withstand harsh conditions like drops, shocks, and vibrations. They are ideally suited for the challenging environments that students often encounter.

Compact and Slim Design

Our compact design ensures that our educational PCs are highly portable, easily fitting into backpacks and small spaces. This portability is achieved without any compromise on performance or durability, making them ideal for students on the go.



2-in-1 Convertible PC

EP20AN2



OPERATING SYSTEM	Windows 11
PROCESSOR	Intel® Processor N100 (6M Cache, up to 3.40 GHz) Intel® Processor N200 (6M Cache, up to 3.70 GHz) Intel® Core™ i3-N3000 Processor (6M Cache, up to 3.80 GHz)
GRAPHIC CARD	Intel® UHD Graphics, Frequency up to 750MHz Intel® UHD Graphics, Frequency up to 1.25GHz
MEMORY	DDR4 SO-DIMM, speed up to 3200 MT/s RAM socket*1 Max up to: 16GB
STORAGE	Up to 128GB eMMC 5.1 Up to 256GB PCIe® NVMe™ SSD
DIMENSIONS	287(W) x 199(D) x 19.9(H) mm
WEIGHT	1.29kg (w/o Handle) 1.32kg (w/Handle)
SCREEN	11.6" HD (1366 x768), IPS, Touch screen
BATTERY	Li-Polymer Battery, 2 cells, 251P/7.7V/5900mAh/45Wh
FRONT CAMERA	2.0M camera integrated microphone arrays (for fix camera) 1.0M camera integrated microphone arrays (for rotate camera) (optional)
SECONDARY CAMERA (optional)	5M AF w/LED
I/O PORT	USB interface 1 x DC-in port 2 x USB 3.2 Gen 1 Type-A 1 x USB3.2 Gen 1 Type-C; USB3.2 Gen 1 Type-C (PD3.0, DP1.2 with Alt mode support)(Optional) 1 x HDMI 1.4 1 x Micro SD card reader 1 x 3.5mm Combo Audio Jack 1 x Nano SIM card reader (Optional) 1 x Kensington Lock
RUGGEDNESS	Compliant MIL-STD 810H standard (76.2cm Drop Height) Spill-resistant keyboard and Touchpad (up to 300cc on keyboard / 200cc on touchpad) IP52 (Optional)
STYLUS	Active stylus (Optional)

EP20TN2



OPERATING SYSTEM	Windows 11
PROCESSOR	Intel® Processor N150 (6M Cache, up to 3.60 GHz) Intel® Processor N250 (6M Cache, up to 3.80 GHz)
GRAPHIC CARD	Intel® UHD Graphics, Frequency up to 1GHz Intel® UHD Graphics, Frequency up to 1.25GHz
MEMORY	DDR5 SO-DIMM, speed up to 4800 MT/s RAM socket*1 Max up to: 32GB
STORAGE	Up to 256GB eMMC 5.1 (optional) Up to 1TB PCIe® NVMe™ SSD
DIMENSIONS	287mm (W) x 199mm (D) x 19.9mm (H)
WEIGHT	1.29kg (w/o Handle)
SCREEN	11.6" HD (1366 x768), IPS, Touch screen
BATTERY	Li-Polymer Battery, 2 cells, 251P/7.7V/5900mAh/ 45Wh
FRONT CAMERA	2.0M camera integrated microphone arrays (for fix camera) 1.0M camera integrated microphone arrays
SECONDARY CAMERA (optional)	5M AF w/LED
I/O PORT	USB interface 1 x DC-in port 2 x USB 3.2 Gen 1 Type-A 1 x USB3.2 Gen 1 Type-C (PD3.0, DP1.2 with Alt mode support) 1 x HDMI 1.4 1 x Micro SD card reader 1 x 3.5mm Combo Audio Jack 1 x Nano SIM card reader (Optional) 1 x Kensington Lock
RUGGEDNESS	Compliant MIL-STD 810H standard (76.2cm Drop Height) Spill-resistant keyboard and Touchpad (up to 300cc on keyboard / 200cc on touchpad) IP52 (optional)
STYLUS	Active stylus (Optional)

Versatile Display Features for Enhanced Learning

Provide 11.6" high-resolution screens, including options with Full HD displays. These devices are equipped with 180-degree hinges for seamless screen sharing and are available in both convertible and clamshell designs, accommodating a variety of usage scenarios.



Advanced Ergonomic Design

Our educational PCs feature advanced ergonomic enhancements, including stylus input and multi-touch support for flexible and intuitive use. Additionally, retractable handles are incorporated for ease of carrying, ensuring both comfort and convenience.





Boost Your Study with Chrome OS

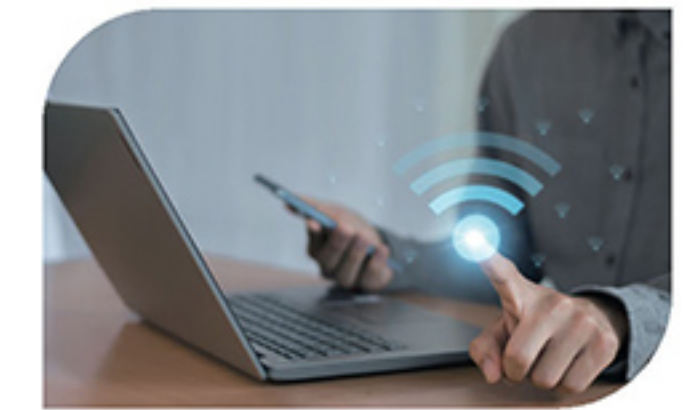


Seamless Cloud Integration

Designed for cloud-learning, ECS Chromebooks integrate smoothly with platforms like Google Classroom, enabling efficient resource access, collaboration, and assignment management. With Chrome OS, they offer automatic updates, built-in virus protection, Google Play Store access, fast boot times, and offline functionality.

Versatile Connectivity

Offers versatile connectivity with multiple ports, including USB-C, USB-A, HDMI, and an SD card reader, ensuring seamless integration with various devices. In addition, these Chromebooks provide reliable and effortless high-speed connections for a smoother using experience.



Ideal for Extended Learning and Business Tasks

The ECS Chromebooks feature a sleek, lightweight, rugged, and durable design, making them ideal for both extended learning sessions and business tasks. With over 10 hours of battery life, they ensure uninterrupted productivity throughout the day without the need for frequent recharges. This combination of portability, slim profile, and long-lasting battery performance makes them a premier choice for students and professionals on the move.

Advanced Collaboration and Precision Drawing

The ECS Chromebooks feature advanced support for the USI 2.0 Stylus Pen with pressure sensitivity, providing precise, pen-like drawing capabilities. Additionally, the 360-degree rotating camera and integrated camera shutter enhance seamless project execution and collaboration. These features make the ECS Chromebooks an ideal choice for students and professionals alike, ensuring versatility and efficiency in any task.



chromebookplus
chromebook



Transforming Cloud Learning and Work with Excellence

ECS Chromebook Series delivers a blend of robust performance, durability, and user-centric design, making them optimal for educational and professional settings. Equipped with the latest processors, these Chromebooks ensure fast and efficient multitasking capabilities. Their high-resolution displays, available in sizes ranging from 11.6-inch to 14.1-inch, offer crisp and vibrant visuals. Compact and lightweight, they are highly portable and feature long-lasting batteries, perfect for users on the move.



EP20AN1C



OPERATING SYSTEM	Chrome OS
PROCESSOR	Intel® Processor N100 (6M Cache, up to 3.40 GHz) Intel® Processor N200 (6M Cache, up to 3.70 GHz)
GRAPHIC CARD	Intel® UHD Graphics, Frequency up to 750 MHz
MEMORY	LPDDR5, speed up to 4800 MT/s Max up to: 8GB
STORAGE	Up to 64GB eMMC 5.1
DIMENSIONS	287(W) x 199(D) x 19(H) mm
WEIGHT	1.2kg with Handle
SCREEN	11.6" HD (1366 x 768), IPS, Non-Touch screen 11.6" HD (1366 x 768), TN, Non-Touch screen
BATTERY	Li-Polymer Battery, 2 cells, 251P/7.7V/5350mAh/41Wh Li-Polymer Battery, 2 cells, 251P/7.7V/5900mAh/45Wh
CAMERA	1.0M rotatable camera integrated microphone arrays
I/O PORT	1 x USB 3.2 Gen 2 Type-C with full function 2 x USB 3.2 Gen 1 Type-A 1 x 3.5mm Combo Audio Jack 1 x Micro SD card reader 1 x Nano SIM card reader (Optional) 1 x Kensington Lock
RUGGEDNESS	Compliant MIL-STD 810H standard (122cm Drop Height) Spill-resistant keyboard and Touchpad (up to 300cc on keyboard / 200cc on touchpad) IP5x

EP20AN2C



OPERATING SYSTEM	Chrome OS
PROCESSOR	Intel® Processor N100 (6M Cache, up to 3.40 GHz) Intel® Processor N200 (6M Cache, up to 3.70 GHz)
GRAPHIC CARD	Intel® UHD Graphics, Frequency up to 750 MHz
MEMORY	LPDDR5, speed up to 4800 MT/s / Max up to: 8GB
STORAGE	Up to 64GB eMMC 5.1
DIMENSIONS	287(W) x 199(D) x 19.9(H) mm
WEIGHT	1.36kg with Handle
SCREEN	11.6" HD (1366 x 768), IPS, Touch screen
BATTERY	Li-Polymer Battery, 2 cells, 251P/7.7V/5350mAh/41Wh Li-Polymer Battery, 2 cells, 251P/7.7V/5900mAh/45Wh
CAMERA	1.0M rotatable camera integrated microphone arrays
I/O PORT	(Standard SKU) 1 x USB 3.2 Gen 2 Type-C with full function 1 x USB 3.2 Gen 1 Type-C with full function 2 x USB 3.2 Gen 1 Type-A / 1 x 3.5mm Combo Audio Jack 1 x Micro SD card reader / 1 x Nano SIM card reader (Optional) 1 x Kensington Lock (w/ HDMI SKU) 1 x USB 3.2 Gen1 Type-C (PD 3.0, DP 1.2 with Alt mode) 2 x USB 3.2 Gen 1 Type-A / 1 x 3.5mm Combo Audio Jack 1 x HDMI 1.4 / 1 x Micro SD card reader 1 x Nano SIM card reader (Optional) / 1 x Kensington Lock
RUGGEDNESS	Compliant MIL-STD 810H standard (76.2cm Drop Height) Spill-resistant keyboard and Touchpad (up to 300cc on keyboard / 200cc on touchpad) IP52
STYLUS	Active Stylus (Optional)

SG20JL1C



OPERATING SYSTEM	Chrome OS
PROCESSOR	Intel® Celeron® Processor N4500 (4M Cache, up to 2.80 GHz) Intel® Celeron® Processor N5100 (4M Cache, up to 2.80 GHz) Intel® Pentium® Silver N6000 Processor (4M Cache, up to 3.30 GHz)
GRAPHIC CARD	Intel® UHD Graphics, Frequency up to 750/800 MHz Intel® UHD Graphics, Frequency up to 850 MHz
MEMORY	LPDDR4X, speed up to 2133 MHz Max up to: 4GB
STORAGE	Up to 64GB eMMC 5.1
DIMENSIONS	287(W) x 199(D) x 18.5(H) mm
WEIGHT	1.17kg
SCREEN	11.6" HD (1366 x 768), IPS, Non-Touch screen 11.6" HD (1366 x 768), TN, Non-Touch screen
BATTERY	Li-Polymer Battery, 2 cells, 251P/7.7V/5350mAh/41Wh Li-Polymer Battery, 2 cells, 251P/7.7V/5900mAh/45Wh
CAMERA	1.0M camera integrated microphone arrays
I/O PORT	(Default) 2 x USB 3.2 Gen 1 Type-C with full function 1 x USB 3.2 Gen 1 Type-A / 1 x 3.5mm Combo Audio Jack 1 x Nano SIM card reader (Optional) (Optimax) 1 x USB 3.2 Gen 1 Type-C with full function 1 x USB 3.2 Gen 1 Type-A / 1 x 3.5mm Combo Audio Jack 1 x Micro SD card reader / 1 x Kensington Lock
RUGGEDNESS	Compliant MIL-STD 810H standard (122cm Drop Height) IP5X

EP20TN1C



OPERATING SYSTEM	Chrome OS
PROCESSOR	Intel® Processor N150 (6M Cache, up to 3.60 GHz) Intel® Processor N250 (6M Cache, up to 3.80 GHz)
GRAPHIC CARD	Intel® UHD Graphics, Frequency up to 1250 MHz
MEMORY	LPDDR5, speed up to 4800 MT/s Support up to 8GB
STORAGE	Up to 64GB eMMC 5.1
DIMENSIONS	287(W) x 199(D) x 19(H) mm
WEIGHT	1.36kg with Handle
SCREEN	11.6" HD (1366 x 768), IPS, Non-Touch screen (Anti-Glare) 11.6" HD (1366 x 768), TN, Non-Touch screen (Anti-Glare) (optional, by request to qualify)
BATTERY	Li-Polymer Battery, 2 cells, 251P/7.7V/5350mAh/41Wh Li-Polymer Battery, 2 cells, 251P/7.7V/5900mAh/45Wh
CAMERA	1.0M fix camera integrated microphone arrays
I/O PORT	(Standard SKU) 1 x USB 3.2 Gen 1 Type-C (PD 3.0, DP 1.2 with Alt mode) 2 x USB 3.2 Gen 1 Type-A / 1 x 3.5mm Combo Audio Jack 1 x Micro SD card reader 1 x Nano SIM card reader (Optional, by request to qualify) 1 x Kensington Lock (w/ HDMI SKU) 1 x USB 3.2 Gen 1 Type-C (PD 3.0, DP 1.2 with Alt mode) 2 x USB 3.2 Gen 1 Type-A / 1 x 3.5mm Combo Audio Jack 1 x HDMI 1.4 / 1 x Micro SD card reader / 1 x Nano SIM card reader 1 x Kensington Lock
RUGGEDNESS	Compliant MIL-STD 810H standard (122cm Drop Height) Spill-resistant keyboard and Touchpad (up to 300cc on keyboard / 200cc on touchpad) IP5x

EP20TN2C



OPERATING SYSTEM	Chrome OS
PROCESSOR	Intel® Processor N150 (6M Cache, up to 3.60 GHz) Intel® Processor N250 (6M Cache, up to 3.80 GHz)
GRAPHIC CARD	Intel® UHD Graphics, Frequency up to 1250 MHz
MEMORY	LPDDR5, speed up to 4800 MT/s Support up to 8GB
STORAGE	Up to 64GB eMMC 5.1
DIMENSIONS	287(W) x 199(D) x 19.9(H) mm
WEIGHT	1.36kg with Handle (TBD)
SCREEN	11.6" HD (1366 x 768), IPS, Touch screen (Anti-Glare)
BATTERY	Li-Polymer Battery, 2 cells, 251P/7.7V/5350mAh/41Wh Li-Polymer Battery, 2 cells, 251P/7.7V/5900mAh/45Wh
CAMERA	1.0M fix camera integrated microphone arrays 1.0M rotatable camera integrated microphone arrays (optional), w/privacy camera shutter
I/O PORT	(Standard SKU) 2 x USB 3.2 Gen 1 Type-C (PD 3.0, DP 1.2 with Alt mode) 2 x USB 3.2 Gen 1 Type-A / 1 x 3.5mm Combo Audio Jack 1 x Micro SD card reader / 1 x Nano SIM card reader (Optional) 1 x Kensington Lock (w/ HDMI SKU) 1 x USB 3.2 Gen 1 Type-C (PD 3.0, DP 1.2 with Alt mode) 2 x USB 3.2 Gen 1 Type-A / 1 x 3.5mm Combo Audio Jack 1 x HDMI 1.4 / 1 x Micro SD card reader 1 x Nano SIM card reader (Optional) 1 x Kensington Lock
RUGGEDNESS	Compliant MIL-STD 810H standard (76.2cm Drop Height) Spill-resistant keyboard and Touchpad (up to 300cc on keyboard / 200cc on touchpad) IP52
STYLUS	Active Stylus (Optional)

SE40MD1C



OPERATING SYSTEM	Chrome OS
PROCESSOR	AMD Ryzen™ and Athlon™ 7020 C Series Processors, 6W AMD Ryzen™ and Athlon™ 7020 C Series Processors, 15W
GRAPHIC CARD	AMD NAVI2 integrated GPU
MEMORY	LPDDR5, speed up to 6400 MHz Max up to: 16GB
STORAGE	Up to 256GB PCIe® NVMe™ SSD
DIMENSIONS	329.2(W) x 219.25(D) x 18.8(H)mm
WEIGHT	1.52kg
SCREEN	14" (1366 x 768), TN, Non-Touch screen (Anti-Glare) 14" (1920 x 1080), IPS, Non-Touch screen (Anti-Glare)
BATTERY	Li-Polymer Battery, 3 cells, 351P/11.55V/4656mAh/55Wh
CAMERA	1.0M camera integrated microphone arrays 2.0M camera integrated microphone arrays (Optional)
I/O PORT	2 x USB 3.2 Gen 1 Type-C with full function 2 x USB 3.2 Gen 1 Type-A 1 x Micro SD card reader 1 x 3.5mm Combo Audio Jack 1 x Kensington Lock
RUGGEDNESS	Compliant MIL-STD 810H standard (76cm Drop Height) Spill-resistant keyboard and Touchpad (up to 300cc on keyboard / 200cc on touchpad)

SE40AN1C



OPERATING SYSTEM	Chrome OS
PROCESSOR	Intel® Processor N100 (6M Cache, up to 3.40 GHz) Intel® Processor N200 (6M Cache, up to 3.70 GHz) Intel® Core™ i3-N305 Processor (6M Cache, up to 3.80 GHz)
GRAPHIC CARD	Intel® UHD Graphics, Frequency up to 750 MHz Intel® UHD Graphics, Frequency up to 1.25 GHz
MEMORY	LPDDR5, speed up to 4800 MT/s Max up to: 8GB
STORAGE	Up to 128GB eMMC 5.1
DIMENSIONS	(6w) 329.2(W) x 219.25(D) x 18(H)mm (15w) 329.2(W) x 219.25(D) x 18.8(H)mm
WEIGHT	(6w) 1.4kg (15w) 1.5kg
SCREEN	14" (1366 x 768), TN, Touch/Non-Touch screen (Anti-Glare) 14" (1920 x 1080), IPS, Touch/Non-Touch screen (Anti-Glare)(Optional)
BATTERY	Li-Polymer Battery, 2 cells, 251P/7.7V/5350mAh/41Wh Li-Polymer Battery, 2 cells, 251P/7.7V/5900mAh/45Wh Li-Polymer Battery, 3 cells, 351P/11.55V/4656mAh/55Wh
CAMERA	1.0M camera integrated microphone arrays 2.0M camera integrated microphone arrays (Optional)
I/O PORT	(6w SKU) 2 x USB 3.2 Gen 1 Type-C with full function 2 x USB 3.2 Gen 1 Type-A 1 x 3.5mm Combo Audio Jack / 1 x Micro SD card reader 1 x Kensington Lock (15w SKU) 2 x USB 3.2 Gen 1 Type-C with full function 2 x USB 3.2 Gen 1 Type-A 1 x 3.5mm Combo Audio Jack / 1 x Micro SD card reader 1 x Kensington Lock
RUGGEDNESS	Compliant MIL-STD 810H standard (76cm Drop Height) Spill-resistant keyboard and Touchpad (up to 300cc on keyboard / 200cc on touchpad)



14" Business Laptop US42AR

Powering the Next Generation of AI



Intel® Core Ultra Series 2 U & H Processors

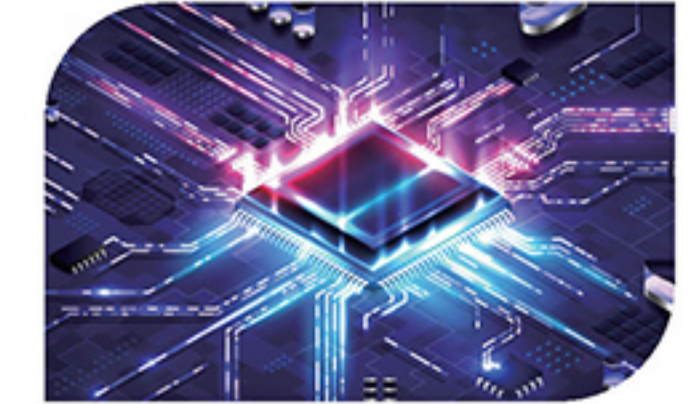
Lightweight 1.36 kg Metal Chassis

Up to 64GB DDR5 4800 MT/s Memory

Up to 1TB PCIe 4.0 x4

Unlock Superior Performance

Experience next-gen performance with the US42AR, equipped with Intel® Core Ultra 200U/200H Series processors. Its 14-inch lightweight design balances mobility and power, ideal for professionals, creators, and gamers. With up to 64GB DDR5 memory and 1TB PCIe 4.0 SSD, multitasking and data access are seamless. A built-in NPU accelerates AI tasks on-device, boosting efficiency while reducing CPU/GPU load. Fast, intelligent, and secure—designed to keep you ahead.



Optimized for Mobile Workers

The US42AR combines sleek design with practical functionality in a slim 17.4–18.4 mm metal chassis, weighing just 1.36 kg for easy mobility. Its 180° hinge supports versatile viewing and collaboration, while fast, stable wireless connectivity ensures uninterrupted productivity. USB-C (DP 1.2 Alt Mode) and HDMI 2.1 enable effortless dual-display setups with up to 4K@60Hz output, ideal for multitasking, teaching, and content sharing.

True-to-Life Color, Optimized for Productivity

The US42AR features a 16:10 Full HD anti-glare display with 100% sRGB accuracy, delivering vibrant, precise visuals for design, editing, and content review. Its 88% screen-to-body ratio maximizes viewing area in a compact design, letting you focus, create, and work efficiently anywhere.



Advanced Security Features

The US42AR delivers comprehensive protection for your sensitive data. It features a built-in camera shutter for privacy and a discrete TPM 2.0 module, which securely stores cryptographic keys, passwords, and digital certificates. Together, these features safeguard your information from unauthorized access and ensure peace of mind for professionals on the go.



Intel Notebook PC

UP42ML



OPERATING SYSTEM	Windows 11
PROCESSOR	Intel® Core™ Ultra Processors
GRAPHIC CARD	NA
MEMORY	DDR5 speed up to 5600MT/s RAM Socket * 2 Support up to 64GB
STORAGE	Up to 1TB PCIe® NVMe™ SSD
DIMENSIONS	313.75(W) x 227.95(D) x 17.5(H)mm
WEIGHT	1.47kg
SCREEN	14" (1920 x 1200), IPS, Non-Touch screen, NTSC45% (Anti-Glare) 14" (1920 x 1200), IPS, Non-Touch screen, sRGB100% (Anti-Glare)
BATTERY	Li-Polymer, 3 cells, 351P /11.55V/4656mAh/ 55Wh
CAMERA	2.0M camera integrated microphone arrays
I/O PORT	1 x Type-C (PD 3.0 only) 1 x HDMI 1.4 1 x USB3.2 Gen 1 Type-C (PD + DP1.2 with Alt mode support) 1 x 3.5mm Combo Audio Jack 1 x Micro SD card reader 1 x RJ45 Gigabit Ethernet 2 x USB3.2 Gen 1 Type-A 1 x Kensington Lock

UP42AR



OPERATING SYSTEM	Windows 11
PROCESSOR	15th Gen Intel® Core™ H-series processors
GRAPHIC CARD	NA
MEMORY	DDR5, speed up to 4800 MT/s RAM socket*2 Support up to 64GB
STORAGE	Up to 1TB PCIe® NVMe™ SSD
DIMENSIONS	313.75(W) x 227.95(D) x 17.5(H)mm
WEIGHT	1.47kg
SCREEN	14" (1920 x 1200), IPS, Non-Touch screen, NTSC45% (Anti-Glare) 14" (1920 x 1200), IPS, Non-Touch screen, sRGB100% (Anti-Glare) (Optional)
BATTERY	Li-Polymer Battery, 3 cells, 351P /11.55V/4656mAh/ 55Wh
CAMERA	2.0M camera integrated microphone arrays
I/O PORT	1 x Type-C (PD only) 1 x HDMI 2.1 1 x USB 3.2 Gen 1 Type-C (PD + DP1.2 with Alt mode support) 1 x 3.5mm Combo Audio Jack 1 x Micro SD card reader 1 x RJ45 Gigabit Ethernet 2 x USB 3.2 Gen 1 Type-A 1 x Kensington Lock

US42AR



OPERATING SYSTEM	Windows 11
PROCESSOR	15th Gen Intel® Core™ H-series processors
GRAPHIC CARD	NA
MEMORY	DDR5, speed up to 4800 MT/s RAM socket*2 Support up to 64GB
STORAGE	Up to 1TB PCIe® NVMe™ SSD
DIMENSIONS	313.6(W) x 227.7(D) x 17.4~18.4(H)mm
WEIGHT	1.36kg
SCREEN	14" (1920 x 1200), IPS, Non-Touch screen, NTSC45% (Anti-Glare) 14" (1920 x 1200), IPS, Non-Touch screen, sRGB100% (Anti-Glare) (Optional)
BATTERY	Li-Polymer Battery, 3 cells, 351P /11.55V/4656mAh/ 55Wh
CAMERA	2.0M camera integrated microphone arrays
I/O PORT	1 x Type-C (PD only) 1 x HDMI 2.1 1 x USB 3.2 Gen 1 Type-C (PD + DP1.2 with Alt mode support) 1 x 3.5mm Combo Audio Jack 1 x Micro SD card reader 1 x RJ45 Gigabit Ethernet 2 x USB 3.2 Gen 1 Type-A 1 x Kensington Lock

US45WL



OPERATING SYSTEM	Windows 11
PROCESSOR	Intel® Core™ Processors Series 3
GRAPHIC CARD	NA
MEMORY	LPDDR5x, speed up to 8533 MT/s Support up to 32GB
STORAGE	Up to 1TB PCIe® NVMe™ SSD
DIMENSIONS	313.6(W) x 227.7(D) x 17.4~17.9(H)mm
WEIGHT	1.45kg
SCREEN	14" (1920 x 1200), IPS, Non-Touch screen, NTSC45% (Anti-Glare) 14" (1920 x 1200), IPS, Non-Touch screen, sRGB100% (Anti-Glare) (Optional)
BATTERY	Li-Polymer Battery, 3 cells, 351P /11.55V/4656mAh/ 55Wh
CAMERA	2.0M camera integrated microphone arrays
I/O PORT	2 x USB3.2 Gen2 Type-C (PD3.0 + DP1.4a with Alt mode support) 1 x HDMI 2.1 1 x 3.5mm Combo Audio Jack 1 x Micro SD card reader 1 x RJ45 Gigabit Ethernet 2 x USB 3.2 Gen 1 Type-A 1 x Kensington Lock

UP42HP



OPERATING SYSTEM	Windows 11
PROCESSOR	AMD Ryzen™ 200 Series Processors
GRAPHIC CARD	AMD Radeon™ 760M Graphics
MEMORY	DDR5, speed up to 4800MT/s RAM Socket*2 Support up to 64GB
STORAGE	Up to 1TB PCIe® NVMe™ SSD
DIMENSIONS	313.75(W) x 227.95(D) x 17.5(H) mm
WEIGHT	1.47kg
SCREEN	14" (1920 x 1200), IPS, Non-Touch screen, NTSC45% (Anti-Glare) 14" (1920 x 1200), IPS, Non-Touch screen, sRGB100% (Anti-Glare) (optional)
BATTERY	Li-Polymer Battery, 3 cells, 351P /11.55V/4656mAh/ 55Wh
CAMERA	2.0M camera integrated microphone arrays
I/O PORT	1 x Type C Port (PD only) 1 x HDMI 2.1 1 x USB3.2 Gen 1 Type-C (PD + DP1.2 with Alt mode support) 1 x 3.5mm Combo Audio Jack 1 x Micro SD Card Reader 1 x RJ45 Gigabit Ethernet 2 x USB3.2 Gen 1 Type-A 1 x Kensington Lock

UP42PW



OPERATING SYSTEM	Windows 11
PROCESSOR	Qualcomm Purwa SC8340XP
GRAPHIC CARD	Qualcomm® Adreno™ GPU
MEMORY	LPDDR5x, speed up to 8448MT/s Support up to 32GB
STORAGE	Up to 1TB PCIe® NVMe™ SSD
DIMENSIONS	313.6(W) x 227.3(D) x 16.9(H) mm
WEIGHT	1.43kg
SCREEN	14" (1920 x 1200), IPS, Non-Touch screen, NTSC 45% (Anti-Glare) 14" (1920 x 1200), IPS, Non-Touch screen, SRGB 100% (Anti-Glare) (Optional)
BATTERY	Li-Polymer Battery, 3 cells, 351P /11.55V/4656mAh/ 55Wh
CAMERA	2.0M camera integrated microphone arrays
I/O PORT	1 x USB3.2 Gen 2 Type-C (PD3.0 + DP1.4a with Alt mode support) 1 x HDMI 2.1 TMD5 1 x USB4 Type-C (PD3.0 + DP1.4a with Alt mode support) 1 x combo Audio jack for microphone/headphone 1 x Micro SD Card Reader 1 x RJ45 Gigabit Ethernet 2 x USB3.2 Gen 1 Type-A 1 x Kensington Lock

UP42KP



OPERATING SYSTEM	Windows 11
PROCESSOR	AMD Krackan 1 8C16T Zen5
GRAPHIC CARD	AMD RDNA 3
MEMORY	DDR5, speed up to 5600MT/s RAM Socket*2 Support up to 64GB
STORAGE	Up to 1TB PCIe® NVMe™ SSD
DIMENSIONS	313.6(W) x 227.3(D) x 16.9(H) mm
WEIGHT	1.45kg
SCREEN	14" (1920 x 1200), IPS, Non-Touch screen (Anti-Glare) 14" (2560 x 1600), IPS, Non-Touch screen, DCI-P3 100%, LBL (Anti-Glare)(Optional)
BATTERY	Li-Polymer Battery, 3 cells, 351P/11.55V/4656mAh/55Wh Li-Polymer Battery, 3 cells, 351P/11.61V/6000mAh/70Wh
CAMERA	2.0M camera integrated microphone arrays
I/O PORT	1 x USB3.2 Gen 2 Type-C (PD3.0 + DP1.4a with Alt mode support) 1 x HDMI 2.1 TMD5 1 x USB4 Type-C Port (PD3.0 + DP2.1 with Alt mode support) 1 x combo Audio jack for microphone/headphone 1 x Micro SD Card Reader 1 x RJ45 Gigabit Ethernet 2 x USB3.2 Gen 1 Type-A 1 x Kensington Lock

UP43PW



OPERATING SYSTEM	Windows 11
PROCESSOR	Qualcomm Purwa SC8340XP
GRAPHIC CARD	Qualcomm® Adreno™ GPU
MEMORY	LPDDR5x, speed up to 8448MT/s Support up to 32GB
STORAGE	Up to 1TB PCIe® NVMe™ SSD
DIMENSIONS	313.6mm x 227.77mm x 19.5mm
WEIGHT	1.47kg (TBD)
SCREEN	14" (1920 x 1200), IPS, Non-Touch screen, NTSC 45% (Anti-Glare) 14" (1920 x 1200), IPS, Non-Touch screen, SRGB 100% (Anti-Glare) (Optional)
BATTERY	Li-Polymer Battery, 3 cells, 351P /11.55V/4656mAh/ 55Wh
CAMERA	2.0M camera integrated microphone arrays
I/O PORT	1 x USB3.2 Gen 2 Type-C (PD3.0 + DP1.4a with Alt mode support) 1 x HDMI 2.1 TMD5 1 x USB4 Type-C (PD3.0 + DP1.4a with Alt mode support) 1 x combo Audio jack for microphone/headphone 1 x Micro SD Card Reader 1 x RJ45 Gigabit Ethernet 2 x USB3.2 Gen 1 Type-A 1 x Kensington Lock
RUGGEDNESS	Compliant MIL-STD 810H standard (76.2cm Drop Height) Spill-resistant keyboard and Touchpad (up to 100cc on keyboard / 100cc on touchpad)(Optional)

Contact Information

Headquarters

Elitegroup Computer Systems Co., Ltd.
9F., No. 22-1, Sec. 3, Zhongshan N. Rd., Zhongshan Dist, Taipei City 104, Taiwan (R.O.C.)
Tel: +886-2-2162-1177
Fax: +886-2-2658-8851
<http://www.ecs.com.tw/>

Worldwide Offices

Elitegroup Computer Systems Inc. (U.S.A.)
6851 Mowry Ave, Newark, CA 94560, USA
Tel: +1-510-226-7333
Fax: +1-510-226-7350
<http://www.ecsusa.com/>

Elitegroup Computer Systems Co., Ltd. (Japan)
2F SAKURA Bldg, 4-6-1, Oi Shinagawa-Ku, Tokyo 140-0014, Japan.
Tel: +81-3-5743-0421
Fax: +81-3-5743-0417
<http://www.ecsjpn.co.jp/>

Elitegroup Computer Systems Korea Co., Ltd. (Korea)
서울특별시 용산구 청파로 40, 삼구빌딩 403호
Tel: +82-2-706-2600
Fax: +82-2-785-8612
<http://www.ecs-korea.com/>

ECS Beijing Office (China)
Room 2008, Block A, Jinqiu International Mansion, No.6, Zhichun Road, Haidian District, Beijing, China
Tel: +81-3-5743-0417
<http://www.ecs.com.cn>

Factories

Golden Elite Technology (Shenzhen) Co., Ltd.
No. 1, Nanhuan Road, Ground Floor, Building 6, Xingying Factory, Shatou Industrial Zone,
Heyi Community, Shajing Street, Bao'an District, Shenzhen City, China
Tel : +86-755-33855888

Elitegroup Technology (Thailand) Co., Ltd.
700/50,52,54 Moo.6 T.Nongmaidang A.Muang Chonburi, Chonburi, Thailand 20000
Tel : +66-038-459493